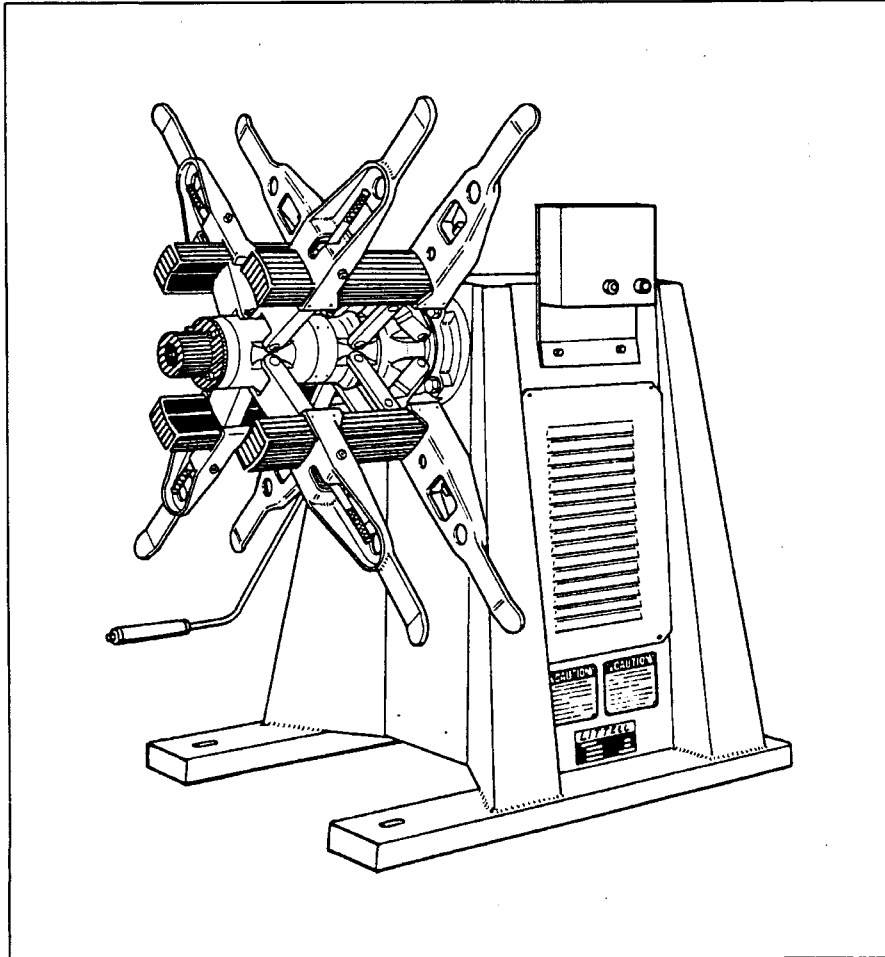


No. 20 Motor Driven Reel: Automatic Centering

SERVICE BULLETIN
NUMBER SD-151

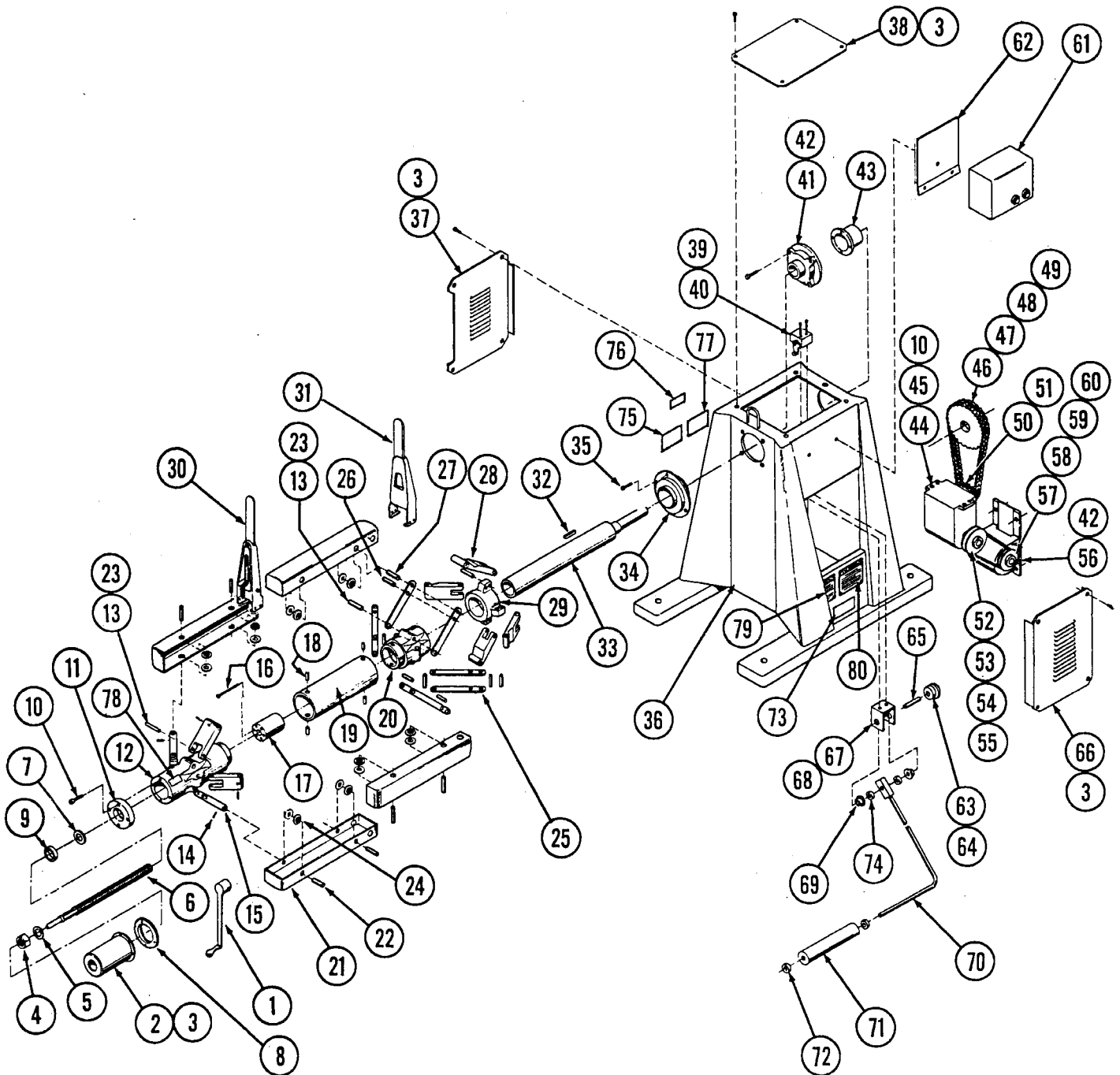


THE FOLLOWING PAGES CONTAIN THE
MAIN ASSEMBLY EXPLODED VIEW, ITEM
LIST AND WIRING DIAGRAM

INDEX	PAGE
EXPLODED VIEW, MAIN ASSEMBLY	2
ITEM LIST	3 & 4
WIRING DIAGRAM	5

LITTELL INTERNATIONAL, INC.
145 SWIFT ROAD, ADDISON, ILLINOIS 60101-1407, U.S.A.
AREA CODE: (630) 916-6662 LITTELL TELEFAX: (630) 916-6663
SERVICE DEPARTMENT TELEFAX: (630) 916-6664

No. 20 Motor Driven Reel: Automatic Centering - Main Assembly



IMPORTANT

When ordering repair parts, specify item number plus serial number, and size of machine. Send all repair part orders to the Addison factory. Area code: (630) 916-6662, Repair Department.

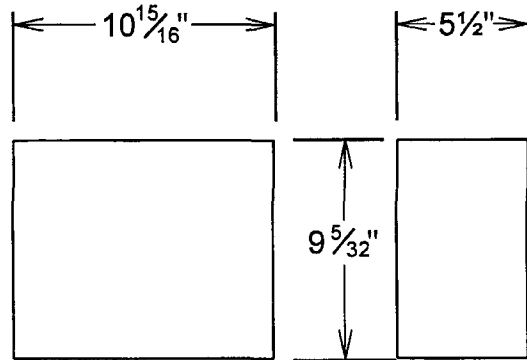
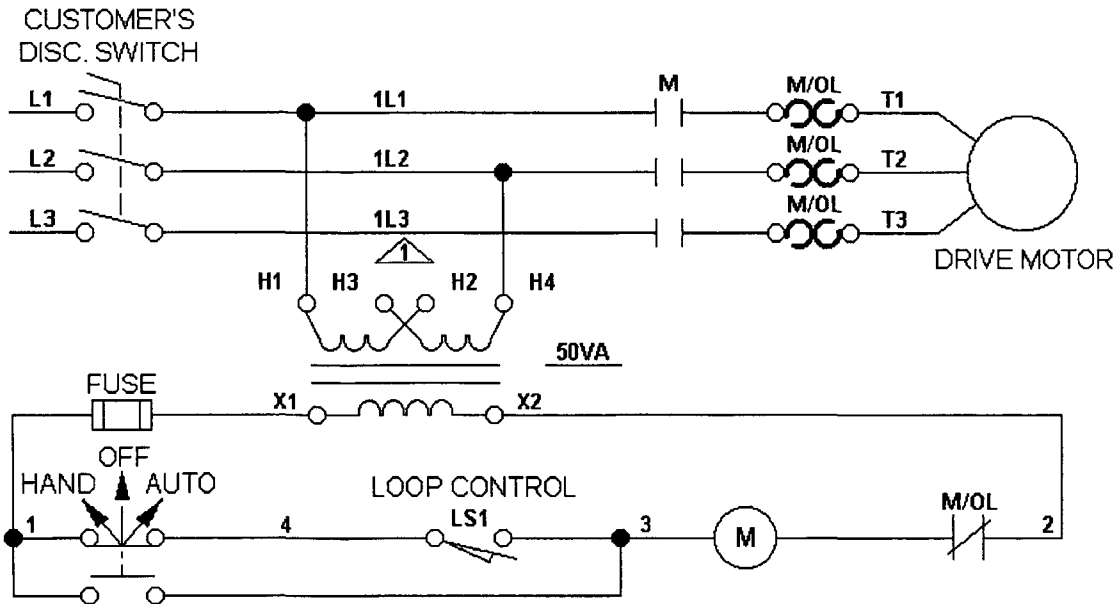
No. 20 Motor Driven Reel: Automatic Centering - Item List

ITEM NO.	DESCRIPTION	ITEM NO.	DESCRIPTION
1.	Wrench	37.	Plate-Cover Rear
2.	Guard-Expansion Shaft	38.	Plate-Cover Top
3.	Screws (Soc. Hd. Cap. ¼"-20 x ½" Lg.)	39.	Switch-Limit ("SQUARE D" Class #9007 Type AW12-CA1)
4.	Nut-Jam (1"-14 Hex. R. H. Thread)	40.	Screws (Soc. Hd. Cap #10-32 x 1-7/8" Lg.)
5.	Washer-Steel (Std. 1.00" I.D.)	41.	Bearing-Ball ("SEALMASTER" MFC-28)
6.	Screw-Adjusting	42.	Screws (Soc. Hd. Cap 3/8"-16 x ¼" Lg.)
7.	Washer-Bearing Thrust	43.	Cover-Spindle Shaft
8.	Plate-Retaining	44.	Reducer-Gear ("CLEVELAND" Worm & Gear Size No. 30E-Ass'y No. 1A 20:1 Ratio - Model No. 30E-1A-20 x 1 - Without Mtg. Feet. *NOTE: Oil level, oil drain, and bearing grease fitting - all below output shaft.
9.	Bearing-Ball ("FAFNIR" #5206W)	45.	Shim
10.	Screws (Soc. Hd. Cap 3/8"-16 x 1" Lg.)	46.	Chain-Roller ("MFGRS STD" #60-2 .75 Pitch-52 Pitches-39" Lg.)
11.	Retaining-Bearing Adjusting Screw	47.	Sprocket-Driver ("MFGRS STD" #D60B36)
12.	Sleeve-Front	48.	Link-Connecting ("MFGRS STD" #60-2)
13.	Pin-Link (Lower)	49.	Key-Feather (.500" x .500" x 2.000" Lg.)
14.	Pin-Roll ("ESNA" #59-048-250-1500)	50.	Sprocket-Drive ("MFGRS STD" #D60B20)
15.	Link	51.	Key-Square (.250" x .250" x 1.250" Lg.)
16.	Screws (Soc. Hd. Cap 3/8"-16 x 3½" Lg.)	52.	Sheave-Driven ("BROWNING" #ITA82)
17.	Nut-Adjusting	53.	Bushing-Split Taper ("BROWNING" #PI-1.000" Bore- .250 x .125 Keyway)
18.	Pin-Roll ("ESNA" #59-062-312-750)	54.	Key-Square (.250" x .250" x .312" Lg.)
19.	Tube-Spacer	55.	Belt-V Type ("BROWNING" #A-33)
20.	Sleeve-Rear	56.	Base-Adjustable Slide (RELIANCE" Series E for A. C. Motor Frame #145T)
21.	Arm-Reel	57.	Motor-Drive ("RELIANCE" #MOT-1- 1200-HT. 145 T NEMA Design D-Hi- Torque, Hi-Slip (5%) 230-460 V. -3Ø-60 Cycle-Open. Dripproof B.B. Cont. Duty.)
22.	Pin-Link	58.	Bushing-Split Taper ("BROWNING" #PI .875" Bore- .187" x .093" Keyway)
23.	Ring-Retaining ("WALDES" Tru-Arc #1500-75)		
24.	Bushing-Arm		
25.	Link		
26.	Pin-Link (Center)		
27.	Pin-Link (Upper)		
28.	Link		
29.	Shoulder-Spindle		
30.	Extension-Front Keeper		
31.	Extension-Rear Keeper		
32.	Key-Feather (.875" x .875" x 4.00" Lg.)		
33.	Shaft Spindle		
34.	Bearing-Ball (SEALMASTER" #MFC-56)		
35.	Screws (Soc. Hd. Cap ¾"-10 x 1½" Lg.)		
36.	Base-Main		

**No. 20 Motor Driven Reel: Automatic
Centering - Item List (Cont'd)**

<u>ITEM NO.</u>	<u>DESCRIPTION</u>
59.	Key (.187" x .093" x 1.312" Lg.)
60.	Sheave-Drive ("BROWNING" #1TA34)
61.	Starter ("WESTINGHOUSE" Non-Rev. Mag. Starter, S/200 Series, Size O, NEMA Type 1 Enclosure with 120V. - 60 Hz. Coil & Hand Off-Auto Selector Switch in Cover & Transformer 50VA for 240/480-120V. 60 Hz. Cat. No. A200-SOCABT
62.	Bracket Starter
63.	Cam
64.	Screw-Set (Soc. Hd. 3/8"-16 x 1/2" Lg.)
65.	Shaft-Cam
66.	Plate-Cover Front
67.	Bracket-Control Arm
68.	Screws (Soc. Hd. Cap 1/4"-20 x 5/8" Lg.)
69.	Bearing-Ball ("NICE" #5891)
70.	Arm-Control
71.	Roller-Wood
72.	Collar ("HALLOWELL" .562" I.D.)
73.	Nameplate
74.	Collar ("HALLOWELL" .75" I.D.)
75.	Plate-Name
76.	Plate-Name (Drain)
77.	Plate-Name (Lub. Speed Reducer)
78.	Plate-Name (Lub. Spindle)
79.	Plate-Caution (Safety for Uncoiler)
80.	Plate-Name-Caution (Instruction/ Compliance)

No. 20 Motor Driven Reel: Automatic Centering - Wiring Diagram



DEVICE	DESCRIPTION	PART NO.	QUANTITY
TRANS.	"WESTINGHOUSE" CONTROL TRANSFORMER TYPE MTA 50VA WITH FUSED SECONDARY 240/480-120V	1F0890	1
H-O-A	"WESTINGHOUSE" 3 POSITION SELECTOR SWITCH WITH (INO-INC) BLOCK FOR PANEL MOUNTING	SSK-1	1
M	"WESTINGHOUSE" NON-REVERSING STARTER SIZE O WITH 120V-60HZ COIL & 3 OVERLOADS A200 SERIES	A200MO CAC	1