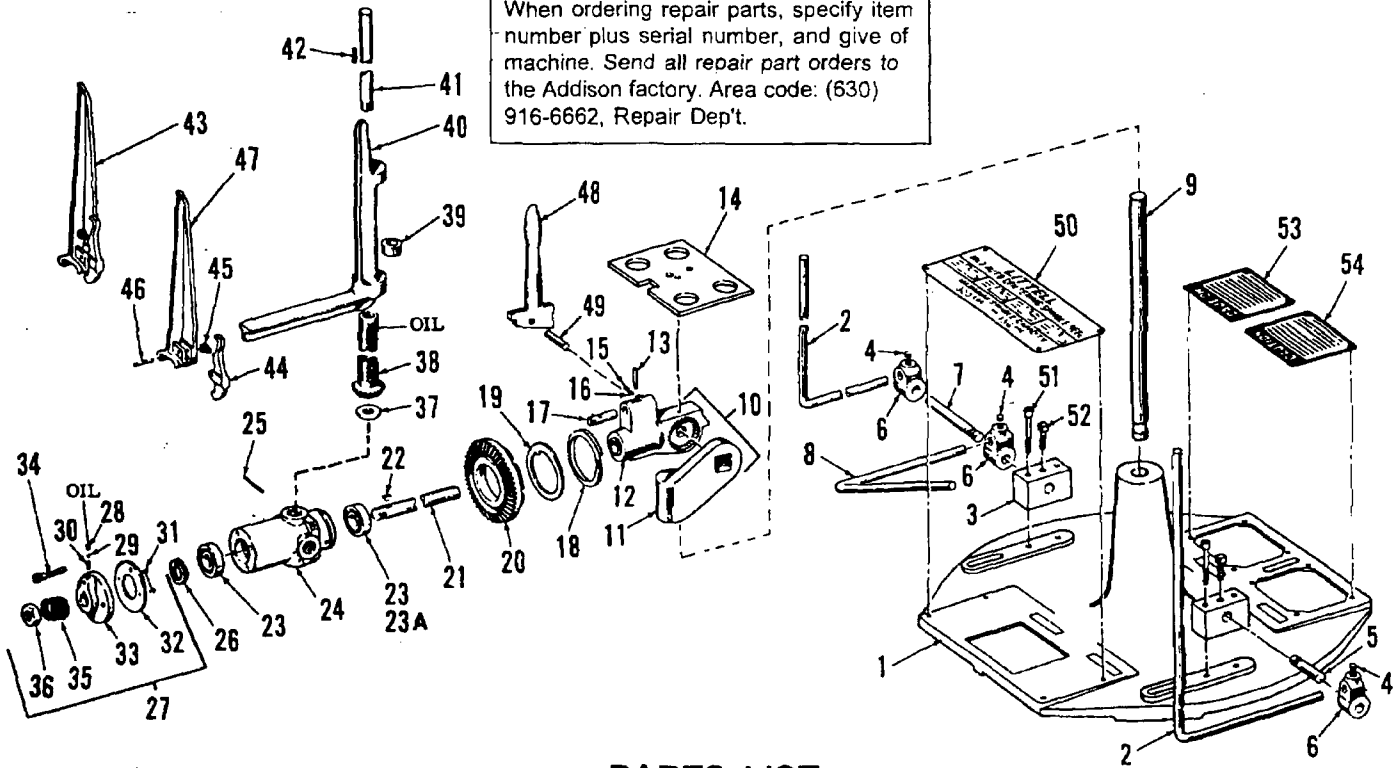


LITTELL

No. 3 and No. 5 PLAIN AUTOMATIC CENTERING REELS

IMPORTANT

When ordering repair parts, specify item number plus serial number, and give of machine. Send all repair part orders to the Addison factory. Area code: (630) 916-6662, Repair Dept.



PARTS LIST

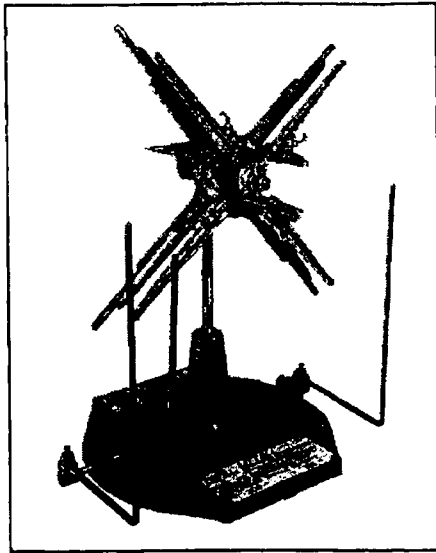
Item No.	Description
1	Base
2	Bar, Stock Guide
3	Lug, Base
4	Button, Brass
5	Shaft, Swivel
6	Swivel, Tapped
7	Shaft, Swivel
8	Bar, Stock Support
9	Post
10	Assembly, Swivel Consisting of: Items 11, and 12
11	Swivel, Post
12	Swivel, Spindle
13	Pin, Shifter (Only on No. 3 Reel.)
14	Plate, Keeper
15	Spring
16	Ball, Steel
17	Pin, Lock (Only on No. 3 Reel.)
18	Ring, Retainer
19	Washer, Thrust

Item No.	Description
20	Gear, Bevel
21	Shaft, Spindle
22	Key, Woodruff
23	Bearing, Ball
23A	Bearing, Ball
24	Hub, Grease Packed
25	Pin, Roll
26	Collar, Bearing Retainer (Only on No. 5 Reel.)
27	Assembly, Friction Cap - Consisting of Items 28 to 36
28	Cover, Oil Hole
29	Ball, Steel Detent
30	Spring, Friction
31	Rivet, Brake lining
32	Washer, Friction
33	Cap, Friction
34	Pin, Hub Lock
35	Spring, Friction
36	Nut, Friction
37	Washer, Thrust & Bearing
38	Screw & Pinion

Item No.	Description
39	Collar
40	Arm
41	Arm, Straight
42	Key
43	Assembly, Keeper - Consisting of: Items 44 to 47
44	Catch, Keeper
45	Spring, Keeper
46	Pin, Hinge
47	Keeper
48	Arm, Gear Locking (Only on No. 5 Reel.)
49	Pin, Pivot (Only on No. 5 Reel.)
50	Plate, Name Capacity
51	Screw, Soc. Hd. Cap - (3/8" - 11 x 1-7/8" Lg.)
52	Screw, Sq. Hd. - (1/2" - 13 x 1 1/4" Lg.)
53	Plate, Caution Safety
54	Plate, Caution Instruction

LITTELL

PARTS LIST AND OPERATING INSTRUCTIONS FOR NUMBER 3 AND NUMBER 5 PLAIN AUTOMATIC CENTERING REELS



CAPACITIES

	NO. 3 REEL	NO. 5 REEL
MAX. WEIGHT OF COIL	300 lbs.	600 lbs.
INSIDE DIA.	10" - 20"	10" - 20"
MAX. OUTSIDE DIA.	46"	46"
MAX. WIDTH	6-½"	10"

OPERATING AND MAINTENANCE INSTRUCTIONS

OPERATING INSTRUCTIONS

A. REMOVE KEEPERS. Release keeper catch (44) and remove keepers (43) from arms. Place keepers in slots provided in keeper plate (14) while loading coil.

B. COLLAPSE ARMS.

(1) On the No. 3 Plain Reel, slide shifter pin (13) forward so that lock pin (17) engages slot in bevel gear (20) to prevent gear from turning.

(2) On the No. 5 Plain Reel, move gear locking arm (48) forward to engage slot in bevel gear (20) to prevent gear from turning.

(3) Rotate spider in a clockwise direction until the arms (40) are contracted at least 1 to 2 inches smaller than the inside diameter of the coil to be loaded.

C. LOCK SPIDER.

(1) Position spider so that one of the arms (40) is in a vertical (12:00 o'clock) position.

(2) Push hub lock pin (34) inward to prevent spider from rotating.

D. ATTACH KEEPERS. Snap keepers (43) into position on the arms so that the coil is tight against the back portion of the arms.

E. EXPAND ARMS.

(1) Release hub lock pin (34) by pulling outward.

(2) Rotate spider in a counter-clockwise direction until the coil is held firmly by all four of the arms.

(3) On the No. 3 Plain Reel, slide shifter pin (13) rearward to disengage lock pin (17) from bevel gear (20).

(4) On the No. 5 Plain Reel, move gear locking arm (48) rearward and disengage from slot in bevel gear (20).

F. ADJUST STOCK GUIDE BARS AND SUPPORT BAR.

Place stock guide bars (2) and stock support bar (8) in proper position against the coil.

G. ADJUST SPIDER TENSION. The friction cap (33) can be adjusted to maintain desired tension on the spider by loosening or tightening friction nut (36).

MAINTENANCE INSTRUCTIONS

All LitteLL Reels are of very rigid construction and, if the capacities are not exceeded, will give years of trouble-free service. The only maintenance required is the oiling at the points shown on the exploded view drawing.

LITTELL INTERNATIONAL, INC.

145 SWIFT ROAD, ADDISON, ILLINOIS 60101-1407, U.S.A.
AREA CODE: (630) 916-6662 LITTELL TELEFAX: (630) 916-6663
SERVICE DEPARTMENT TELEFAX: (630) 916-6664