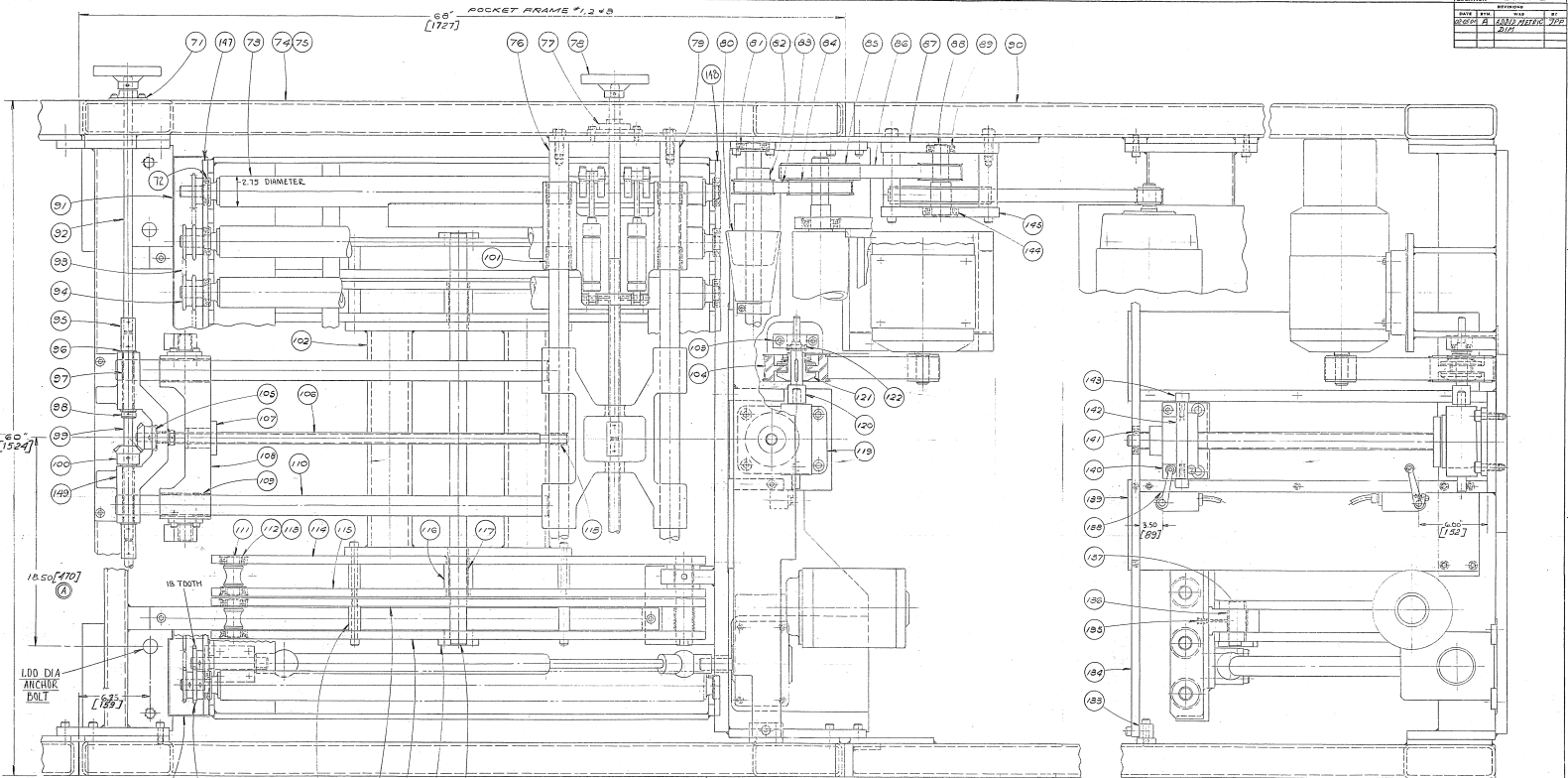


FORM LOCATION: D-287402
 REV. TITLE: 287402
 DESIG. A. 12133 12133 12133
 DATE: 12/15/95



NOTE: DIMENSIONS IN DRAWING ARE ASSUMED STATION (CONTINUED FROM SHEET #1)

ITEM NO.	PART NO.	DESCRIPTION	QTY	UNIT
71	K-038289	BRG. FLANGE MFG. #28289	2	
72	K-038287	BRG. BALL W/D #28287	32	
73	C-28808	ASST. CONVOYER ROLL	11	
74	D-288385	FRAME SIDE RACK #28	1	
75	D-288374	FRAME SIDE RACK #2	1	
76	B-288656	SHAFT GUIDE SUPPORT	2	
77	K-038078	BRG. FLANGE MFG. #38078	2	
78	K-038081	HAND WHEEL #38081	4	
79	B-288618	SHAFT GUIDE SUPPORT	1	
80	B-288630	ROLL CONE	2	
81	K-038308	BRG. BALL W/D #38308	2	
82	K-038066	BRG. BALL W/D #38066	2	
83	K-038047	SELF-TIGHTENING WORM #20100	1	
84	K-038477	BRG. FLANGE MFG. #38477	2	
85	K-038478	BRG. BALL W/D #38478	2	
86	C-286214	BRG. BALL W/D #286214	2	
87	B-286023	BRACKET INTER-ROLLER PULLEY	1	
88	B-286042	SHAFT-INTER. DRIVE PULLEY	1	
89	K-038070	BRG. BALL W/D #38070	2	
90	D-288372	FRAME SIDE RACK #1, 2 & 3	1	
91	B-288408	GUARD S-SOCKET PLATFORM	1	
92	A-288178	SMART BACK PLATE ADV.	1	
93	K-038011	CHAIN ROLLER #38011	2	
94	K-038288	S-SOCKET #28288	2	
95	B-288538	COUPLING ADV. SCREW	3	
96	K-038468	BUSHING OILITE #38468	3	
97	K-038468	BUSHING OILITE #48846	3	
98	K-038082	COLLAR W/ALGOWELL 76 I.D.	2	
99	K-038082	SMART BACK PLATE ADV.	1	
100	K-038090	BEARING OILITE #38090	2	
101	K-038022	BUSHING OILITE #A2202	2	
102	C-288262	BRACKET-TIE DOWN	1	
103	B-288262	BUSHING OILITE #28262	2	
104	B-288048	BLOCK BRG. INCLINATION DR.	1	
105	C-288048	PULLEY SPECIAL DRIVEN SET	1	
106	K-038078	BUSH. THRUST OILITE #1701	1	
107	B-288588	SCREW-BACK PLATE ADV.	1	
108	A-038088	ADJUSTING 100-B	1	
109	C-288522	BLOCK BACK GUIDE FLATE	1	
110	K-038278	BUSHING OILITE #A2202-5	2	
111	B-288588	SMART BACK GUIDE SURROPT	1	
112	B-288588	SMART BACK PLATE	1	
113	K-038070	BRG. BALL W/D #38070	2	
114	K-038178	RING RET. SPRINGLOW #38178	1	
115	B-288581	ARM. SCISSORS LOWER RIVOT	1	
116	B-288581	ARM. SCISSORS UPPER RIVOT	1	
117	A-288100	SPACER W/BLUSH ARM SCISSORS	1	
118	K-038572	BUSHING OILITE #A1702-8	1	
119	K-038242	BUSHING OILITE #A1702-5	1	
120	B-288008	SMART VACUATION DRIVE	1	
121	K-038288	S-SOCKET #28288	2	
122	K-038177	RING RET. SPRINGLOW #38177	1	
123	B-288408	GUARD DRIVE LEVEL PLATFORM	1	
124	K-038288	S-SOCKET #28288	2	
125	A-288588	SPACER SCISSORS BAR	1	
126	B-288581	ARM. SCISSORS UPPER RIVOT	1	
127	B-288581	ARM. SCISSORS LOWER RIVOT	1	
128	B-288773	SMART-RETAINER KEY	1	
129	B-288633	SMART-CENTER RIVOT	1	
130	B-288584	FRAME SIDE FRONT #2 & 3	1	
131	D-288573	FRAME SIDE FRONT #2	1	
132	D-288571	FRAME SIDE FRONT #2 & 3	1	
133	B-288646	BLOCK-SUPPORT	1	
134	B-288647	PLATE-TOP STACK ELEVATOR	1	
135	K-038482	CUR. OIL W/STAYLE #38482	1	
136	K-038072	BUSHING OILITE #A1702-5	1	
137	B-288524	SMART-END RIVOT RETAINER	1	
138	C-288524	PLATE SIDE BLEW (#1, 2 & 3)	1	
139	C-288602	PLATE FRONT (#1, 2 & 3)	1	
140	C-288746	BRACKET LEFT PLATFORM	1	
141	K-038288	BRG. BALL W/D #28288	2	
142	B-288746	BAR-ROLLER GUIDE	1	
143	K-038286	BEARING W/ROLL #C-1/2 3/8	2	
144	K-038222	BRG. BALL W/D #28222	2	
145	B-288620	PLATE-INTER-ROLLER PULLEY	1	
146	X-133397	SHIM-ELWIN TAKEUP	1	
147	B-288640	PLATE-BUILDING	1	
148	B-288657	RATE-BEARING	1	
149	C-288621	SUPPORT-BACK PILER HEAD	1	

SHEET CONTAINS SPECIFIC INFORMATION
 SEE REFERENCE TABLE
 DIMENSIONS IN INCHES
 DIMENSIONS IN METRIC
 LAYOUT #1, 2 & 3 ELEV. STA. NEW (METRIC)
 4200-604 STA. N.S. 374269
 DATE: 12/15/95
 DRAWN BY: [Signature]
 CHECKED BY: [Signature]
 APPROVED BY: [Signature]
 SCALE: AS SHOWN
 SHEET NO. 3 OF 3
 PROJECT NO. 287402
 19107-95