

DATE	REV.	BY	CHK.
D-287402			

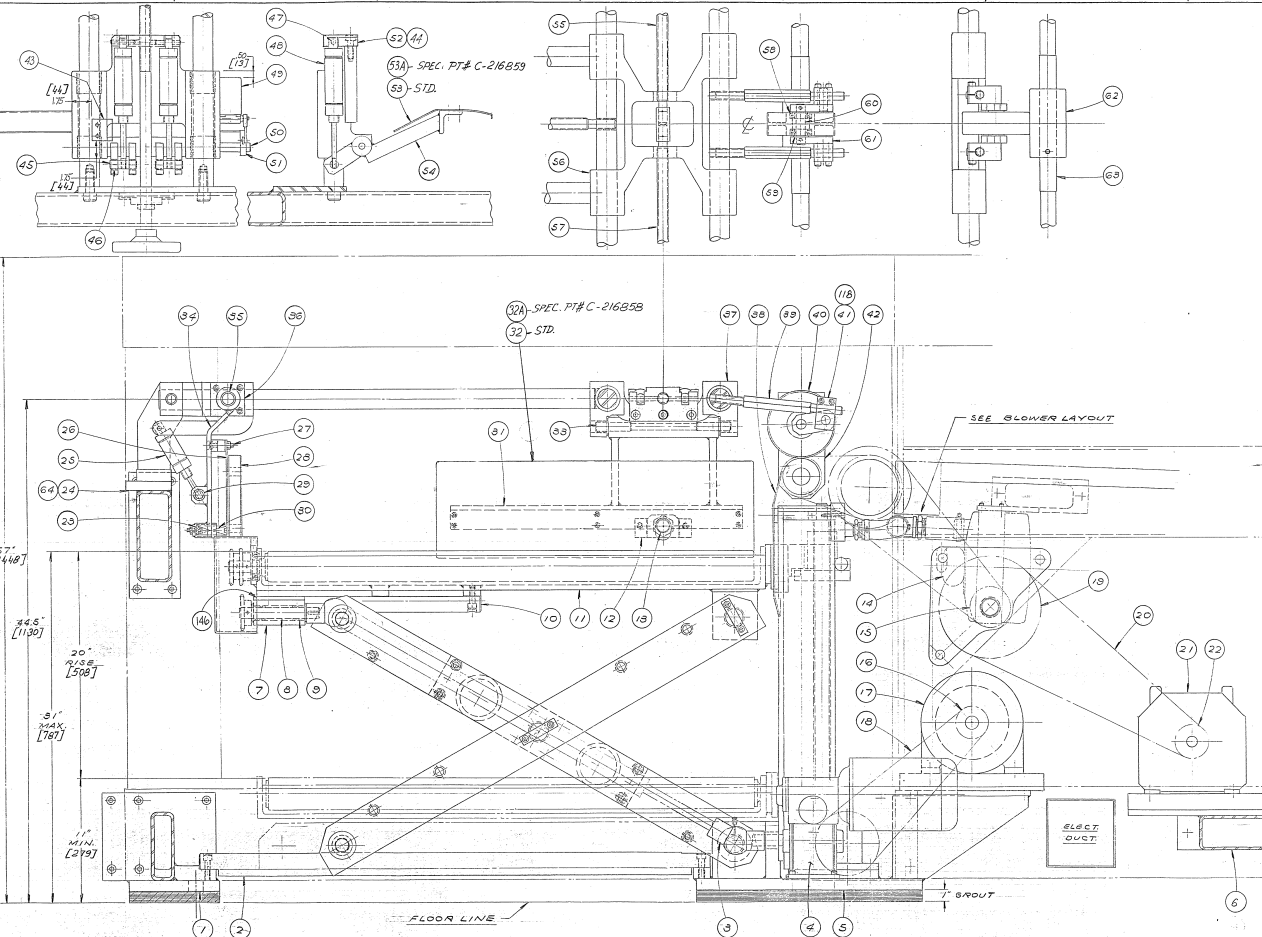
PARTS LIST CONTINUED ON SHEET # 2

64	/	C-285982	BEAM-TIE W/LOWER MTS #3
63	/	B-138057	SHIRT-CONE ROLL DRIVE
62	/	A-288631	ROLL-CONE CENTER
61	/	A-288632	ARM-HOLDOWN WHEEL
60	/	B-288633	SHIRT-HOLDOWN WHEEL
59	/	K-031354	SACRER-HOLDOWN WHEEL
58	/	K-031354	BEARING-BALL W/ #28503
57	/	B-288636	SCREW-SIDE PLATE-RAIL W/NO. 1
56	/	C-288637	SCREW-BACK PLATE-HOLD
55	/	K-035533	SCREW-SIDE PLATE-L.H. THRS.
54	/	C-288635	BRACKET-SIDE PLATE-L.H.
53	/	C-288632	PLATE-SIDE L.H. W/NO. 3W.
52	/	B-288632	PLATE-CYL. SUPPORT-R.H. THRS.
51	/	A-288630	ODS-SIDE PLATE-R.H. PLATE
50	/	K-288630	SHIRT-BRACKET RIVOT
49	/	K-038808	SPRING-LIMIT PRESSURE
48	/	K-034277	CYL. AIR W/NO. 4
47	/	B-288638	RIVOT-CYLINDER RIVOT
46	/	K-034278	BUSHING-DILITE #A-288611
45	/	A-288614	RIN-CYLINDER CLEVIS
44	/	B-288612	PLATE-CYL. SUPPORT-L.H. THRS.
43	/	A-288636	PLATE-BEARING CONE ROLL
42	/	A-288633	LOCK-HOLD DOWN-WHEEL
41	/	A-123952	WHEEL-HOLD DOWN
40	/	B-128051	ROD-LOCK SUPPORT
39	/	C-288618	PLATE-RACK-ARMENT
38	/	C-288616	SHIRT-BRACKET-SIDE PLATE
37	/	A-128606	RIN-RIVOT BACK PLATE
36	/	K-034745	BUSHING-DILITE #A-1207.8
35	/	C-288623	BRACKET-BACK & SUPPORT
34	/	B-288616	SHIRT-BRACKET RIVOT
33	/	B-288618	PLATE-SIDE PLATE
32	/	C-288618	BRACKET-SIDE PLATE-R.H.
31	/	K-259017	SPRING-LEA-RC-055J-11
30	/	K-030346	BUSHING-DILITE #A-1087.7
29	/	B-259018	PLATE-BACK STOP
28	/	K-031352	MOUNT-LOCK H/NO. 1024.45
27	/	B-150181	BRACKET-BACK PLATE GUIDE
26	/	K-034184	CYL. AIR W/NO. 4
25	/	C-285983	BEAM-TIE MTS PLATE #1244
24	/	A-188660	CLIP-SPRING LOCATOR
23	/		DRIVE BRACKET
22	/		SEE
21	/		3/4 R.ELECT.MOTOR
20	/		DRIVE LAYOUT
19	/		BELT-UNIVERSAL
18	/		DRIVEN BRACKET
17	/	K-221067	BELT-UNIVERSAL 1/20 5M-50
16	/		SEE R/3
15	/		MOTOR 2 HP
14	/	K-034100	SPRING-LIMIT PRESSURE
13	/	K-034703	SPRING-LIMIT PRESSURE
12	/		SEE R/3
11	/		SHOWER
10	/		BRACKET-SPRING
9	/		BRACKET-PROD. SWITCH
8	/	D-288656	PLATFORM-ELEVATOR
7	/	B-288655	ROD-RAIL-SHORT
6	/	K-031175	BUSHING-DILITE #A-1207.7
5	/	B-288638	SHIRT-BRACKET-ELEVATOR
4	/	B-138058	LOCK-SHIRT-DRIVE SHIRT
3	/	C-188605	BRACKET-MOTOR M.T.G.
2	/	D-288638	BRACKET-TIE-STACK-ELEVATOR
1	/	SEE R/3	TRUCKER MOUNT 3/4 HP
	/		ROD-RAIL-LONG
	/		ROD-RAIL-LONG
	/		BEAM-TIE-ELEVATOR #1,2,3

THRU HOLE PART NO. DESCRIPTION

UNITS	INCHES	DECIMAL EQUIVALENT	MM
CONVERSION	1 INCH = 25.4 MM	1 MM = 0.03937 INCH	
SCALE	AS SHOWN		
DATE	1997-09-24		
PROJECT	D-287402		
DRAWN	1997-09-24		
CHECKED	1997-09-24		
APPROVED	1997-09-24		

SCALE: 3/4" = 1'-0" (METRIC)



ENG. REF:
FOR 3/4" MATERIAL (METRIC) SEE D-287523

NOTE:
QUANTITIES SHOWN
ON PARTS LIST ARE
FOR ONE STATION.

20° ±0.36 / 1508

3" MAX. [767]

1" MIN. [25.4]

FLOOR LINE

ELECT. OUCT.

GROUND