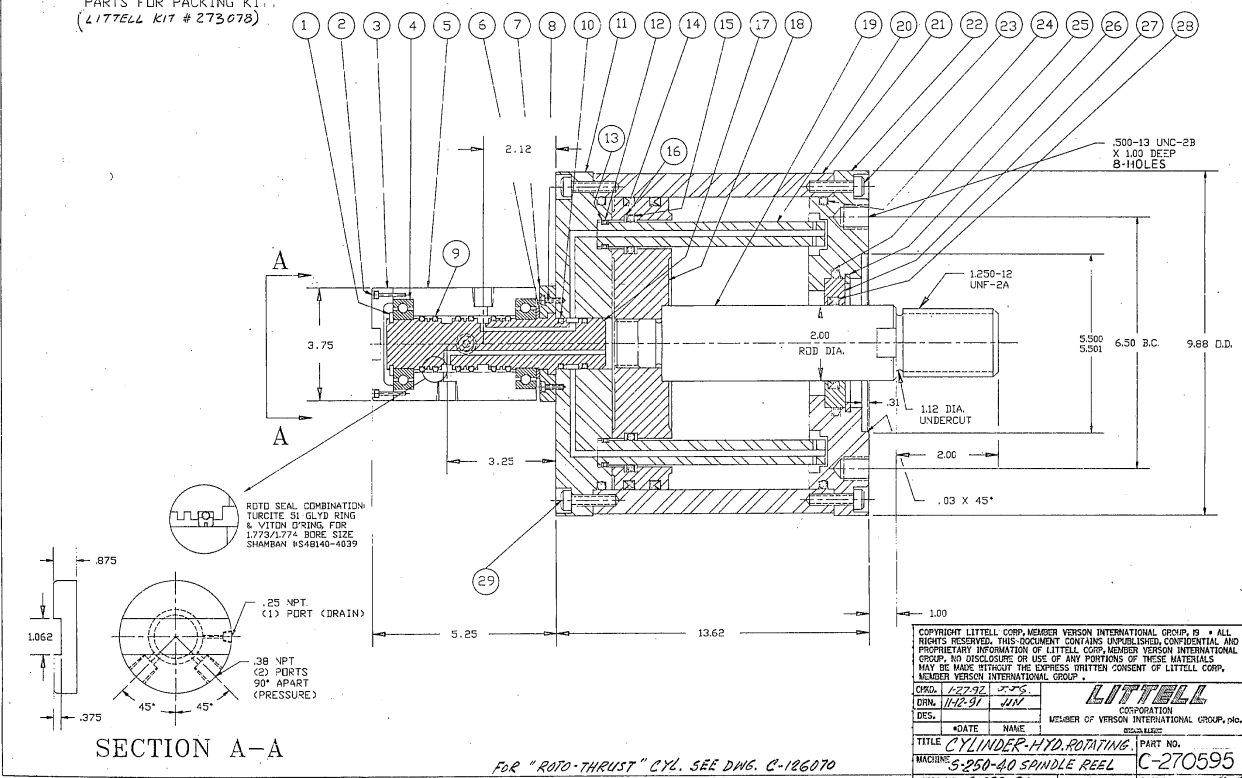


KEY	QTY.	DISCRPTION	PART NO.	LITTELL P.N.	KEY	QTY.	DISCRPTION	PART NO.	LITTELL P.N.
1	1	RETAINING RING	D19286-177	205154	16	4	PISTON GUIDE BACK UP *	006-00090-210	
2	2	END CAP SCREW	D25726E-3	205153	17	1	COUPLING SHAFT	R1754B ©	270592
3	1	SLOTTED END CAP	RT1490-A	205150	18	1	PISTON	101-800025-005	270669
4	2	BALL BEARING	S01-00006-000	202463	19	1	PISTON ROD	61C01-8020-005 (R)	270668
5	1	20 GPM HOUSING	101-4042-000 (C)	205148	20	2	GUIDE PIN	R1666A	
6	1	SPACER	RT121A	205152	21	1	CYLINDER TUBE	1657RB-80	213222
7	1	RETAINER	RT300-334A	283940	22	1	FRONT HEAD MR2	1655RB-8020	
8	4	RETAINER SCREWS	D25726H-5	283941	23	15	HEAD SCREWS	D25726K-11	
9	6	ROTD SEAL *	001-00005-000	270734	24	2	TUBE O'RING *	001-00003-367B	K-097766
10	2	COUPLING O'RING *	001-00003-129V (C)	270664	25	1	GLAND O'RING *	001-00003-349B	K-097764
11	1	BACK HEAD	1656RB-80	26	1	SNAP RING	D19290-450	202464	
12	2	GUIDE PIN O'RING *	001-00003-113B	K-097767	27	1	GLAND	113RB-8020	232465
13	4	GUIDE PIN BACK UP *	006-00090-113		28	1	ROD SEAL *	001-00001-003M	K-097772
14	2	PISTON SEAL *	001-00002-006M	K-097763	29	15	CAP SCREWS	D25726K-9	
15	2	PISTON GUIDE O'RING *	001-00003-210B	K-097765					

F.J. LITTELL MACHINE CO.
 8.00 BORE X 2.00 ROD DIA.
 7.00 STROKE
 CYLINDER ASSEMBLY
 AND PARTS LIST
 LITTELL PT.No. 270595
 (HANNIA PART NO.
 MR2-RT-SS-8x7-J-AL-2-A)

NOTE:
 (*) INDICATES RECOMMENDED
 PARTS FOR PACKING KIT.
 (LITTELL KIT # 273078)



COPYRIGHT LITTELL CORP. MEMBER VERNON INTERNATIONAL GROUP, INC. ALL RIGHTS RESERVED. THIS DOCUMENT CONTAINS UNPUBLISHED, CONFIDENTIAL AND PROPRIETARY INFORMATION OF LITTELL CORP. MEMBER VERNON INTERNATIONAL GROUP. NO DISCLOSURE OR USE OF ANY PORTIONS OF THESE MATERIALS MAY BE MADE WITHOUT THE EXPRESS WRITTEN CONSENT OF LITTELL CORP. MEMBER VERNON INTERNATIONAL GROUP.

ORD. 12792 JFS
 DSN. 11-12-91 JHL
 DES. MEMBER OF VERNON INTERNATIONAL GROUP, INC.

LITTELL
 CORPORATION

DATE NAME
 TITLE CYLINDER-HYD.ROTATING PART NO.
 MACHINE S-250-40 SPINDLE REEL C-270595
 ORG. NO. 90338-91 SHT 1 OF 1 SCALE: 1:1

FOR "ROTD-THRUST" CYL. SEE DWG. C-126070