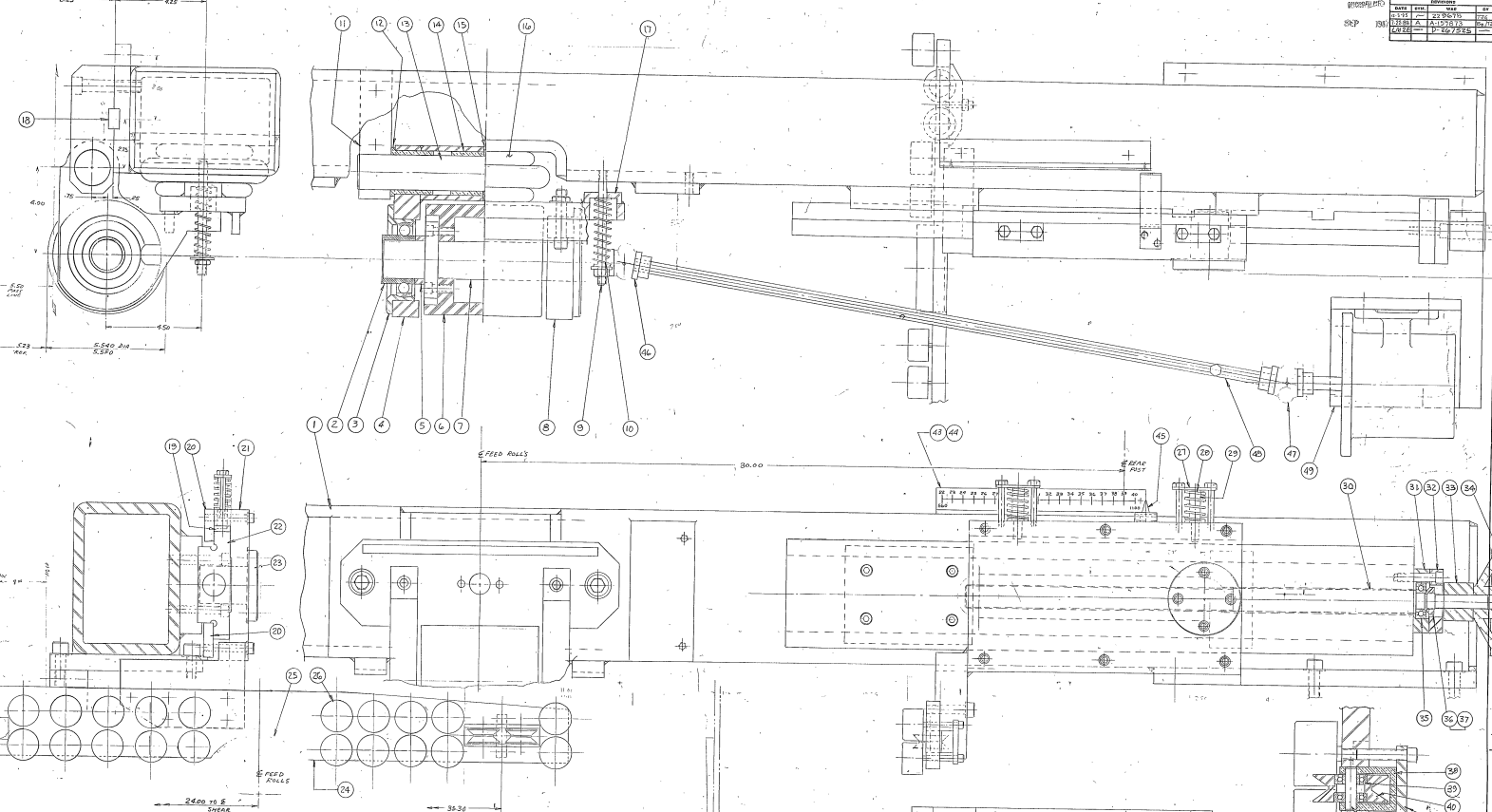


REV	DATE	BY	CHKD
1	11-15-58	WJL	
2	11-15-58	WJL	
3	11-15-58	WJL	



ITEM	PART NO.	DESCRIPTION	QTY	REMARKS
1	X-11664	SUPPORT-SHAFT	2	
2	X-11663	WAY-ADJUSTING	2	
3	X-11662	WAYS-REAR STOP GUIDE	2	
4	X-11661	SLIDE-REAR STOP GUIDE	2	
5	X-11660	SPACER-SUPPORT PLATE	2	
6	X-11659	SPACER-SLIDE CLAMP	2	
7	X-11658	KEY-SHAFT SURROD	2	
8	X-11657	CONNECT-ADJUSTING SPRING	2	
9	X-11656	ACTUATOR TRIGESTONE AIR TAKE	2	
10	X-11655	WASHER-SCREWS	2	
11	X-11654	BUSHING-DIGITE #AN-2000-S	2	
12	X-11653	BUSHING-DIGITE #FR-2000	2	

13	K-09244	BEARING-IND. #209SL04	1	
14	K-09243	HANDWHEEL "BACCANI" #154501	1	
15	X-22770	SPACER-STOP GUIDE HANDWHEEL	2	
16	A-11020	PLATE-MTE-STOPPING	1	
17	A-11730	HOUSING-BEARING	1	
18	X-22734	SCREW-ADJUSTING	2	
19	A-15470	FLANGE-SLIDE LOCATOR	2	
20	K-09430	SPRING "SHUNT" #9-1048-11	2	
21	X-15243	SHIMS-SPRING PKT	2	
22	A-15540	WHEEL "INTERROLL" # 2306 1.50 DIA	2	
23	A-15540	SHIMS-SPRING PKT	2	
24	X-22734	PLATE-ROLLER SURROD (AM-1)	1	

PARTS CHECKED BY: _____ DRAWING CHECKED BY: _____ DIMENSIONS: _____ TOLERANCES: _____ X REF AX: 017 X REF: 0007 X REF: 0007 APPROVE: 3 11-58 DRAWN: 3 11-58 CHECKED: 3 11-58	231002 231002-05 231002
---	-------------------------------