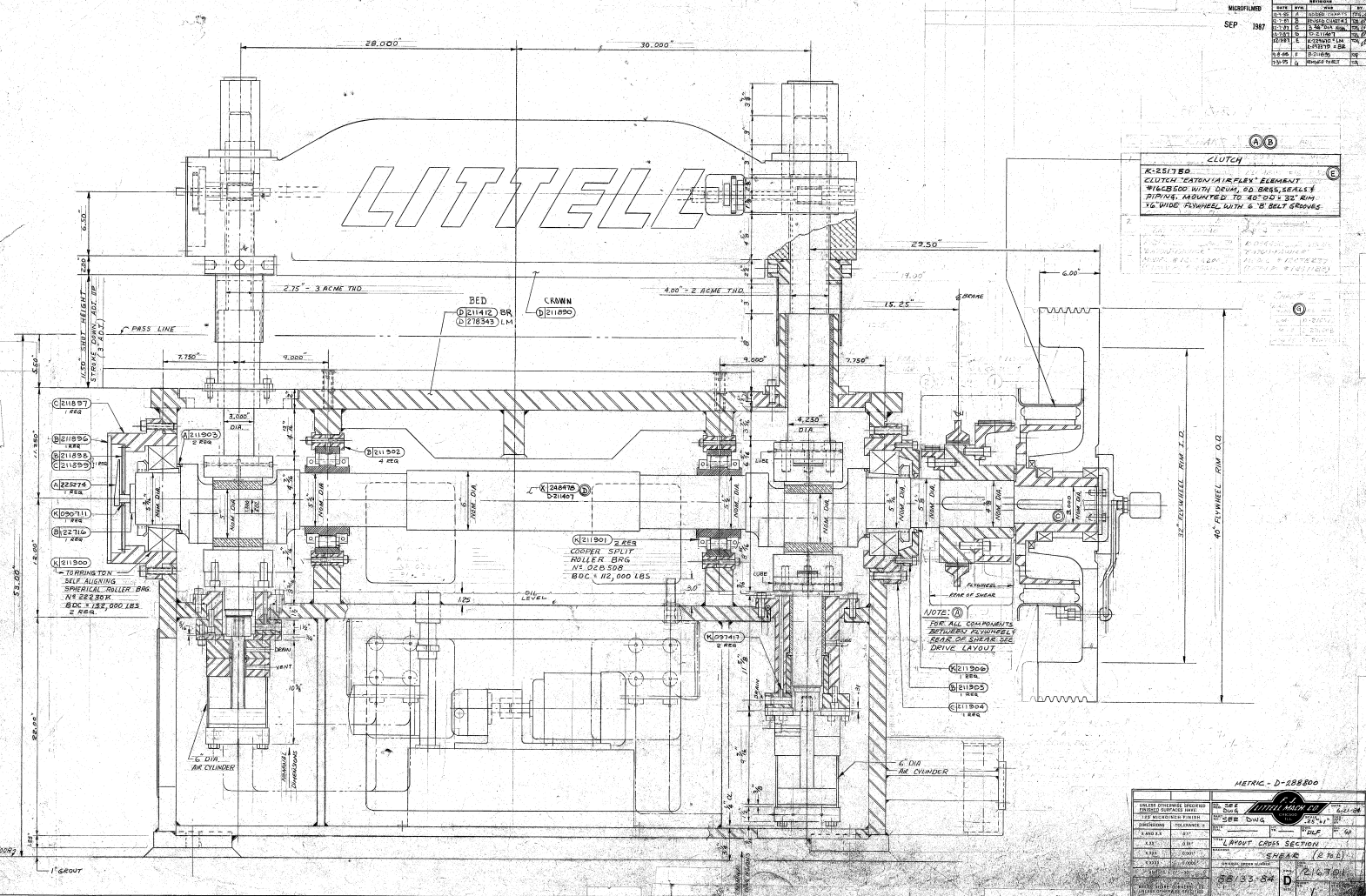


NO.	DATE	BY	REVISION
1	09/15/87	WJ	ISSUED FOR CONSTRUCTION
2	09/15/87	WJ	ISSUED FOR CONSTRUCTION
3	09/15/87	WJ	ISSUED FOR CONSTRUCTION
4	09/15/87	WJ	ISSUED FOR CONSTRUCTION
5	09/15/87	WJ	ISSUED FOR CONSTRUCTION
6	09/15/87	WJ	ISSUED FOR CONSTRUCTION
7	09/15/87	WJ	ISSUED FOR CONSTRUCTION
8	09/15/87	WJ	ISSUED FOR CONSTRUCTION
9	09/15/87	WJ	ISSUED FOR CONSTRUCTION
10	09/15/87	WJ	ISSUED FOR CONSTRUCTION



**CLUTCH**  
 K-251750  
 CLUTCH "CATANA" R/FLEX ELEMENT  
 W/BACKS WITH DOWN, 50.000, SERIES  
 DRIVING, MOUNTED TO 40" O.D. x 32" I.D.  
 1/2" WIDE FLYWHEEL WITH 6" BELT GROOVES

- (R11857) 2 REG
- (R21895) 1 REG
- (R21899) 1 REG
- (R21899) 1 REG
- (A22274) 1 REG
- (C20711) 1 REG
- (R22714) 1 REG
- (R11900) 1 REG

1-TURBOWIN  
 SELF-ALIGNING  
 SPECIAL ROLLER BRG  
 N# 22230X  
 BDC = 122,000 LBS  
 2 REG.

(R11901) 2 REG  
 COPPER SPLIT  
 ROLLER BRG  
 N# 02B508  
 BDC = 112,000 LBS

NOTE: (A)  
 FOR ALL COMPONENTS  
 REFER TO DRAWING  
 SHEAR OR SHEAR SEE  
 DRIVE LAYOUT

- (R11900) 1 REG
- (R11900) 1 REG
- (R11900) 1 REG

METRIC - D-288800

DATE	BY	CHK	APP	REV
09/15/87	WJ	WJ	WJ	1
09/15/87	WJ	WJ	WJ	2
09/15/87	WJ	WJ	WJ	3
09/15/87	WJ	WJ	WJ	4
09/15/87	WJ	WJ	WJ	5
09/15/87	WJ	WJ	WJ	6
09/15/87	WJ	WJ	WJ	7
09/15/87	WJ	WJ	WJ	8
09/15/87	WJ	WJ	WJ	9
09/15/87	WJ	WJ	WJ	10

LAYOUT CROSS SECTION  
 SHEET (2 of 4)  
 2/24/87  
 20/33-84  
 D