

B 117332  
(2) REQ'D

10.25° MAX. OPERATING  
ANGLE

B 117333 BR4 (UPPER)  
X 125882 LM-1 (LOWER)

HAND GREASE PACK THIS AREA  
(4 PLACES PER JOINT)

A 154465  
(8) REQ'D

SCREW - FLAT HD. SOC. CAP  
375-16 1.00" LG. WITH  
"NYLOCK" INSERT. (8) REQ'D  
(094223)

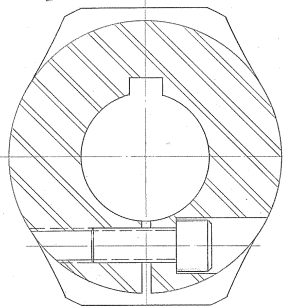
(096135)  
RING-G. MEGAS STD.  
1.38" x 1.50" x .062"  
UNIFORM DASH #328

A 154466  
(8) REQ'D

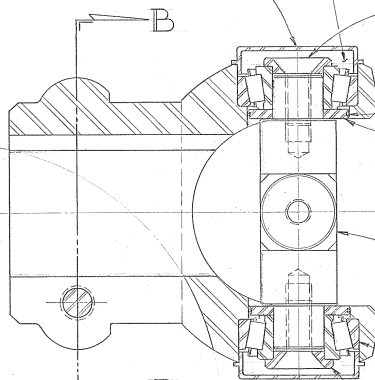
B 117329  
(2) REQ'D

BRG. - ROLLER, TIMKEN  
#LM 11210-LM11243 (8) REQ'D  
001258

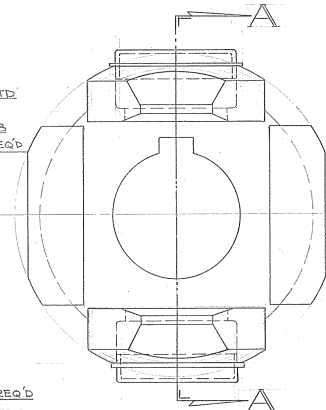
A 117334  
(8) REQ'D



SECTION B-B



SECTION A-A



BOTH ENDS TO BE IDENTICAL

UNLESS OTHERWISE SPECIFIED FINISHED SURFACES HAVE 125 MICROINCH FINISH		DATE 2-1-81	
DIMENSIONS	TOLERANCE ±	SCALE FULL	BY SC
X AND X.X	0.1"	DATE 11-1-80	BY SC
.XXX	0.01"	LAYOUT-UPPER UNIVERSAL JOINT	
.X.XX	0.001"	BR-4 PRESS	
.XXXX	0.0005"	ORIGINAL ORDER NUMBER	DWG. NO. C 155475
BREAK SHARP CORNERS 0.03 UNLESS OTHERWISE SPECIFIED		86520-80	REV. 1