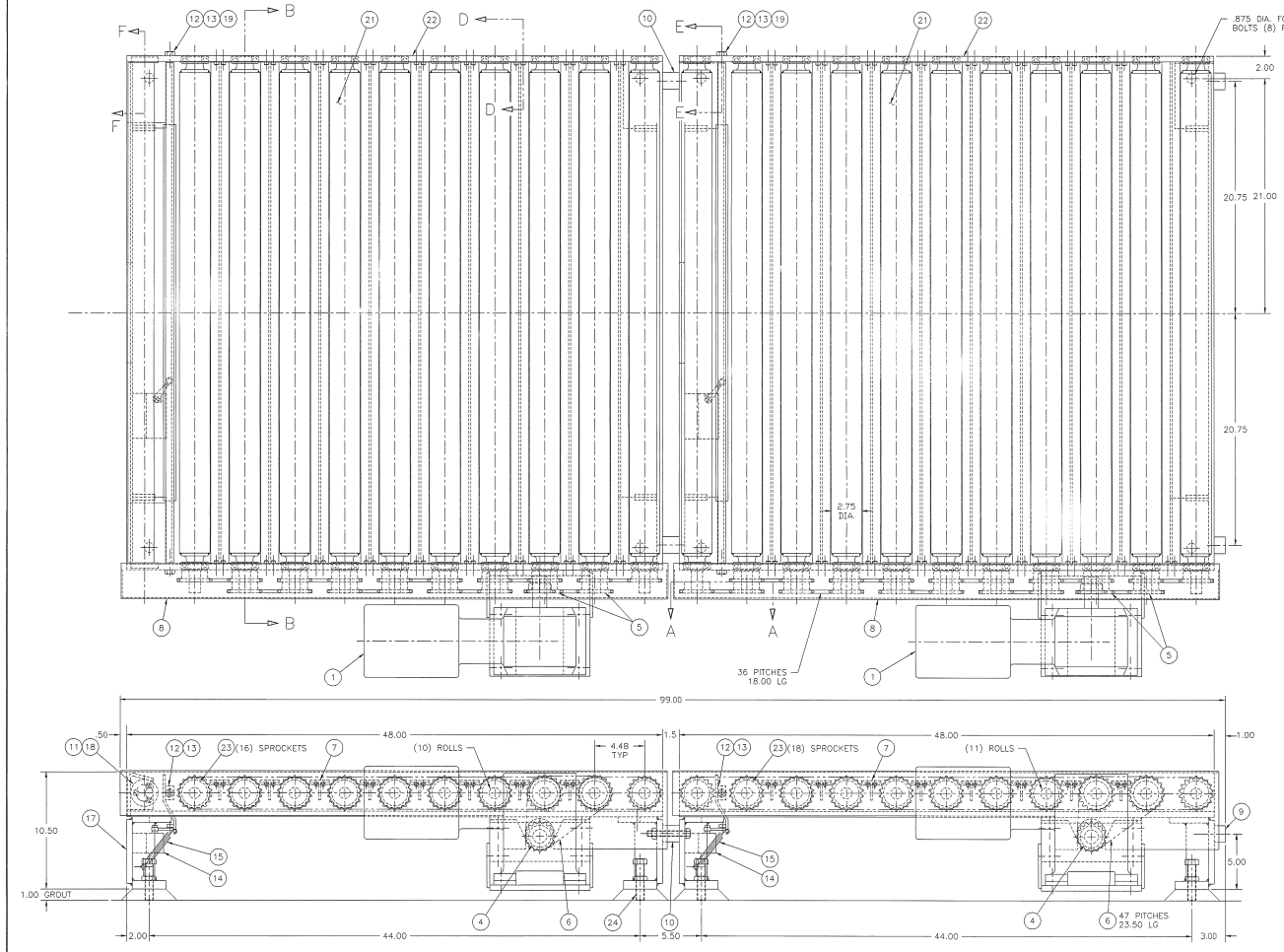


DATE	BY	BY
06-28-94	J	4800 WRE
06-10-95	J	4800 WRE
06-21-95	E	4800 WRE



25 B-143385	BRACE-GUARD	2	4
24 K-006100	SET SCREW 750"-10 X 3.25 LG	8	24
23 K-094289	SPRKT-"MFG-STO" DRIVEN #40B18.	34	156
22 B-133356	FRAME-SIDE DISCHARGE CONV.	4	12
21 C-128003	ASSEMBLY-CONVEYOR ROLL	21	-
20 K-003731	BEARING-"N.D." #Z-499006	42	216
19 K-750977	HEX HD SCREW 500"-13 X 2.00 LG	4	8
18 C-128005	BRACKET-CONV. STOP	2	4
17 C-133357	BEAM-SUPPORT DISCHARGE CONV.	4	12
16 B-128025	PLATE-TAPPING (L.S.)	2	5
15 K-094451	SPRING-"LEE" EXTENSION PART #E-0006-10	2	4
14 K-093805	SWITCH-"SQUARE D" LIMIT-9007 TYPE S&S-CAL	2	4
13 B-126784	PLATE-SWING-(L.S.) CONV.	2	4
12 K-091444	BUSHING-"DULITE" #FF-620-1	4	8
11 A-128029	PLUG-CONV. STOP BRACKET	4	8
10 B-126752	SPACER-CONV. TO CONV. 1.50 TK.	2	4
9 C-242374	SPACER-CONV. TO STACKER 1.00 TK.	2	8
8 B-126754	GUARD-SPROCKET-DISCHARGE CONV.	2	4
7 K-140039	BAR-TEE #M1020 CB x 1.25 x 1.25 x 44.88 LG	16	56
6 K-090911	CHAIN-"MFG-STO" ROLLER #40-50P	AS REQ'D	AS REQ'D
5 A-216790	SPROCKET-DRIVEN #40B19 (SPECIAL)	4	8
4 K-094290	SPROCKET-"MFG-STO" 1.25 BORE PART #A02B16 #A02B17	2	4
3 B-143473	BRKT-MOTOR MTC. SUPPORT	2	4
2 B-133359	BRKT-MOTOR-CONV. DRIVE	2	4
1 K-094016	MOTOR-"WINSMITH" 1/2 HP 1725 RPM 50/1500 25:1 RATIO FRAME#E6012001 20	2	4

ITEM	PART NO.	DESCRIPTION	QTY	UNIT
PARTS LIST				
<small>CONVEYOR ENGINEERING INTERNATIONAL GROUP INC. ALL RIGHTS RESERVED. THE INFORMATION CONTAINED HEREIN IS THE PROPERTY OF CONVEYOR ENGINEERING INTERNATIONAL GROUP INC. AND IS NOT TO BE REPRODUCED OR TRANSMITTED IN ANY FORM OR BY ANY MEANS, ELECTRONIC OR MECHANICAL, INCLUDING PHOTOCOPYING, RECORDING, OR BY ANY INFORMATION STORAGE AND RETRIEVAL SYSTEM, WITHOUT THE WRITTEN PERMISSION OF CONVEYOR ENGINEERING INTERNATIONAL GROUP INC.</small>				
DRW	06-25-79	LD		
CHK	06-23-79	SE		
DATE	TITLE	BY	GROUP	SCALE
06-23-79	CONVEYOR ENGINEERING INTERNATIONAL GROUP INC.			D-143484
DRW NO.	06-25-79	SHT 1	OF 2	SCALE: 1/8"=1'-0"

NOTE: THIS DRAWING REPLACES D-140035