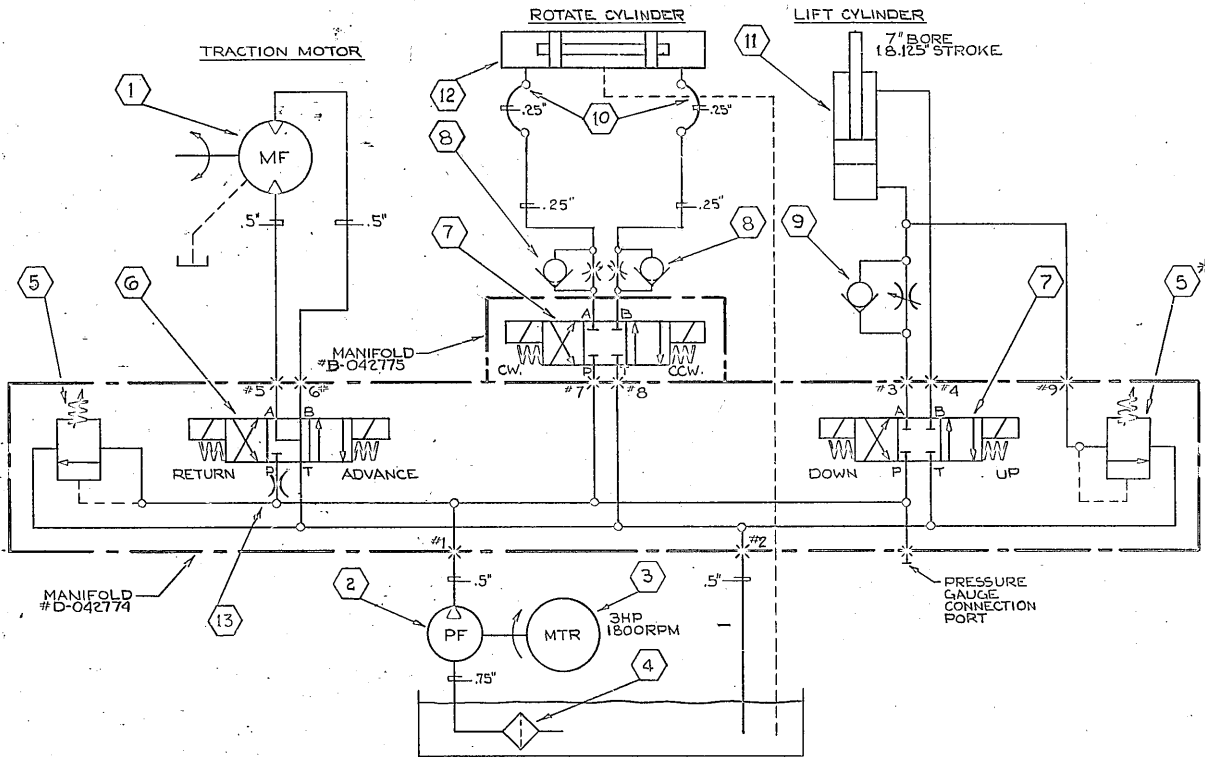


DATE	BY	APP'D	BY
12-8-43	BO		
5-19-72	A	093572	MCC
		20-1-76	24YDC
		118-5-11	118-6-97
3-18-96	B	091301	NEW

JUL 1981
C-234882



SEQUENCE OF OPERATION

1. START PUMP, MOTOR & ENERGIZE VALVE CONTROL CIRCUIT.
2. LONGITUDINAL MOVEMENT - HOLD "FORWARD" OR "REVERSE" BUTTON TO ENERG. VALVE (6)
3. TO ROTATE TABLE - HOLD "CLOCKWISE" OR "COUNTERCLOCKWISE" BUTTON TO ENERG. VALVE (7)
4. VERTICAL TRAVEL - HOLD "UP" OR "DOWN" BUTTON TO ENERGIZE VALVE (7)
5. VALVE (5) PREVENTS DAMAGE TO REEL WHEN ARMS ARE EXPANDED.

NOTE:
USE "PARKER" TRIPLE-LOK FITTINGS. ALL TUBING TO BE -.375" UNLESS NOTED.
.25"-.5" TUBING - .035" WALL
.625"-1" TUBING - .049" WALL

QTY.	DESCRIPTION	LITTELL PART NO.
13	1 ORIFICE-PIPE PLUG	B-117952
12	1 CYLINDER-"LITTELL"-FOR SADDLE ROTATION	D-86086
11	1 CYLINDER-"LITTELL"-HYD. 7" BORE, 18.125" STROKE	C-80180
10	1 HOSE ASSY. ROTARY TOP	C-111749
9	1 VALVE-"PARKER" FLOW CONTROL # P600 - .375" NPT	093185
8	2 VALVE-"PNEUTROL" FLOW CONTROL # P600 - .375" NPT	092689
7	2 VALVE-"VICKERS"-4WAY 3POS. DOUBLE SOL. 110V # DG454-O12C-50 3/16" HZ	091517
6	1 VALVE-"VICKERS"-4WAY 3POS. DOUBLE SOL. 110V # DG454-O12C-50 3/16" HZ	091516
5	2 VALVE-"VICKERS"-RELIEF #CG-03-B-10-581	091299
4	1 OIL STRAINER-"MARVEL"-#E-3/4"-5	091304
3	1 MOTOR-"REULAND" 3HP 1800RPM. 30-60HZ 220/440V 30-60HZ 230/460V 30-60HZ 240/480V 30-60HZ 330V	PER CUSTOMER SPEC'S 092709
2	1 PUMP-"VICKERS"-HYD. #V-105-E-10	091244
1	1 MOTOR-"VICKERS"-HYD #M2-210-25-3B-13	091274

PARTS LIST

UNLESS OTHERWISE SPECIFIED FINISHED SURFACES HAVE:	
125 MICRON FINISH	
DIMENSIONS	TOLERANCE ±
IN AND IN	0.1"
IN	0.01"
IN	0.03"
IN	0.0005"
DRAWN CHAMP CORNERS 0.0 UNLESS OTHERWISE SPECIFIED	

DATE: 8-21-74
 DRAWN BY: J.P.
 CHECKED BY: H.P.
DIAGRAM-HYDRAULIC-GRAPHICAL
 #S-250 COIL CAR-ROTATING TOP
 ORIGINAL ORDER NUMBER: 81144-74
 REVISED BY: B
 PART NO.: 116849