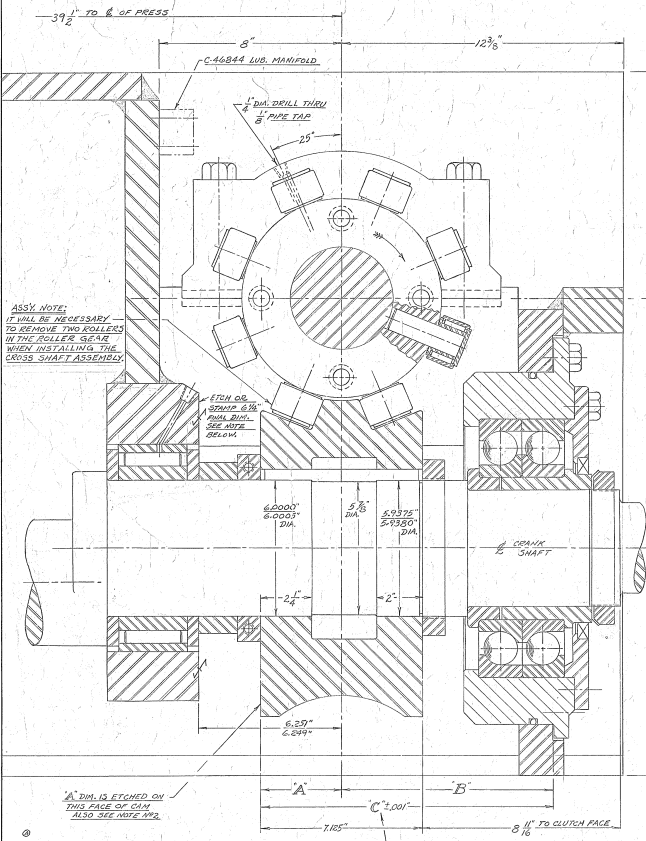


**NOTE #1**  
 PRE-ASSEMBLE CROSS SHAFT ON BENCH WITHOUT THE SPACER A-42997.  
 ADJUST LOCKNUT B-41673 TO GIVE APPROX. 5/16 TO 3/8 INCH PRELOAD.  
 SPIN THE BEARING SUPPORT B-61679 DURING THIS FITTING TO SEAT  
 THE ROLLERS AGAINST THE RACE FLANGES. MAKE ASSEMBLY FOR OVERALL LENGTH,  
 THEN DISASSEMBLE AND FIT THE INDIVIDUAL PARTS. SPIN EACH TO SIZE.  
 REQUIRED OVERALL LENGTH AND PRELOAD.

**NOTE #2 (ADD SEE DRAW)**  
 THE DIMENSION FROM THE "LARGE BORE" FACE OF THE ROLLER GEAR CAM TO  
 THE TRUE CENTERLINE OF THE CAM (DIM. A) WILL BE ETCHED ON THIS FACE. THE  
 PRESS BUILDER IS TO USE THIS DIM. IN ALIGNING THE TRUE CENTERLINE OF THE  
 CROSS SHAFT BORE WITH ZERO END MOTION OF PRESS SHAFT/CAM.

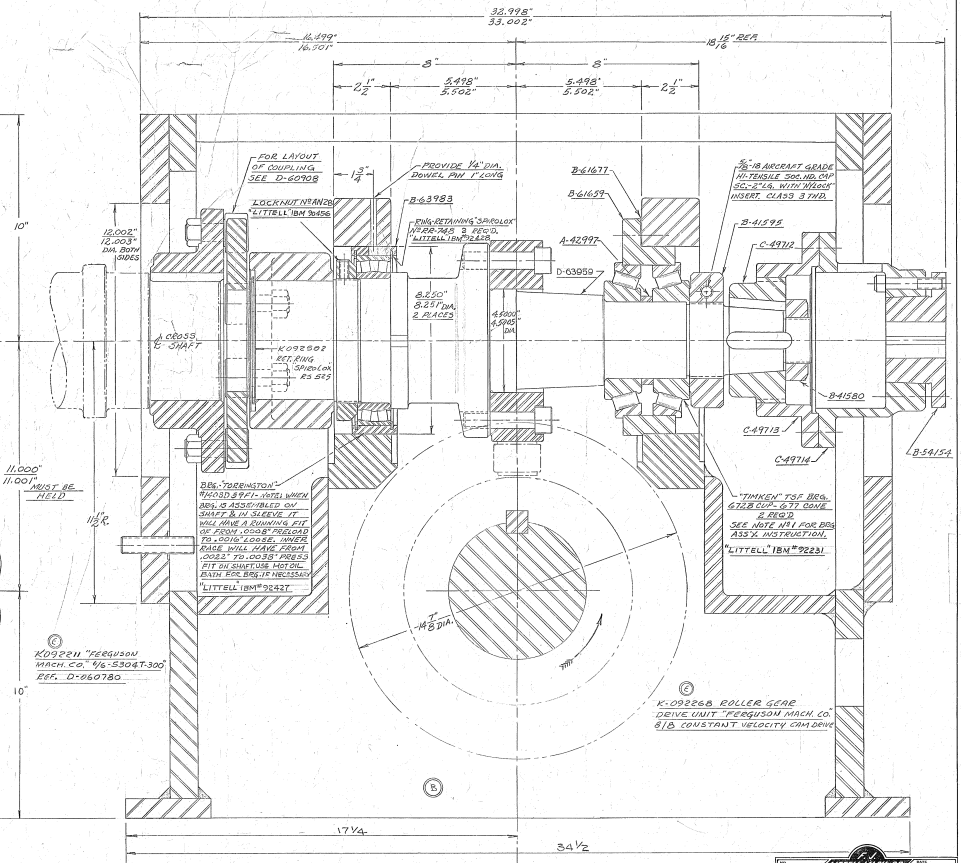


**ASSY. NOTE:**  
 IT WILL BE NECESSARY  
 TO REMOVE TWO ROLLERS  
 IN THE ROLLER GEAR  
 WHEN INSTALLING THE  
 CROSS SHAFT ASSEMBLY.

A DIM. IS ETCHED ON  
 THIS FACE OF CAM  
 ALSO SEE NOTE #2.

THE CROSS-SHAFT BGS SUPPORT  
 FACE SHOULD BE TRUE. SINCE  
 DIM. C IS TO BE DETERMINED  
 FROM THE SUM OF THE ETCHED  
 DIM. A AND THE ACTUAL  
 OVERSHOULDER DIM. B.

DIM. C IS TO BE DETERMINED  
 FROM THE SUM OF THE ETCHED  
 DIM. A AND THE ACTUAL  
 OVERSHOULDER DIM. B.



KO2226 ROLLER GEAR  
 DRIVE UNIT FERGUSON MACH. CO.  
 918 CONSTANT VELOCITY COMPANY

REVISION		DATE		BY	
1	REV. 1	10/15/66	J. W. H.		
2	REV. 2	10/15/66	J. W. H.		
3	REV. 3	10/15/66	J. W. H.		
4	REV. 4	10/15/66	J. W. H.		
5	REV. 5	10/15/66	J. W. H.		

LITTLE WALKER		DATE		BY	
1	REV. 1	5/21/67	J. W. H.		
2	REV. 2	5/21/67	J. W. H.		
3	REV. 3	5/21/67	J. W. H.		
4	REV. 4	5/21/67	J. W. H.		
5	REV. 5	5/21/67	J. W. H.		