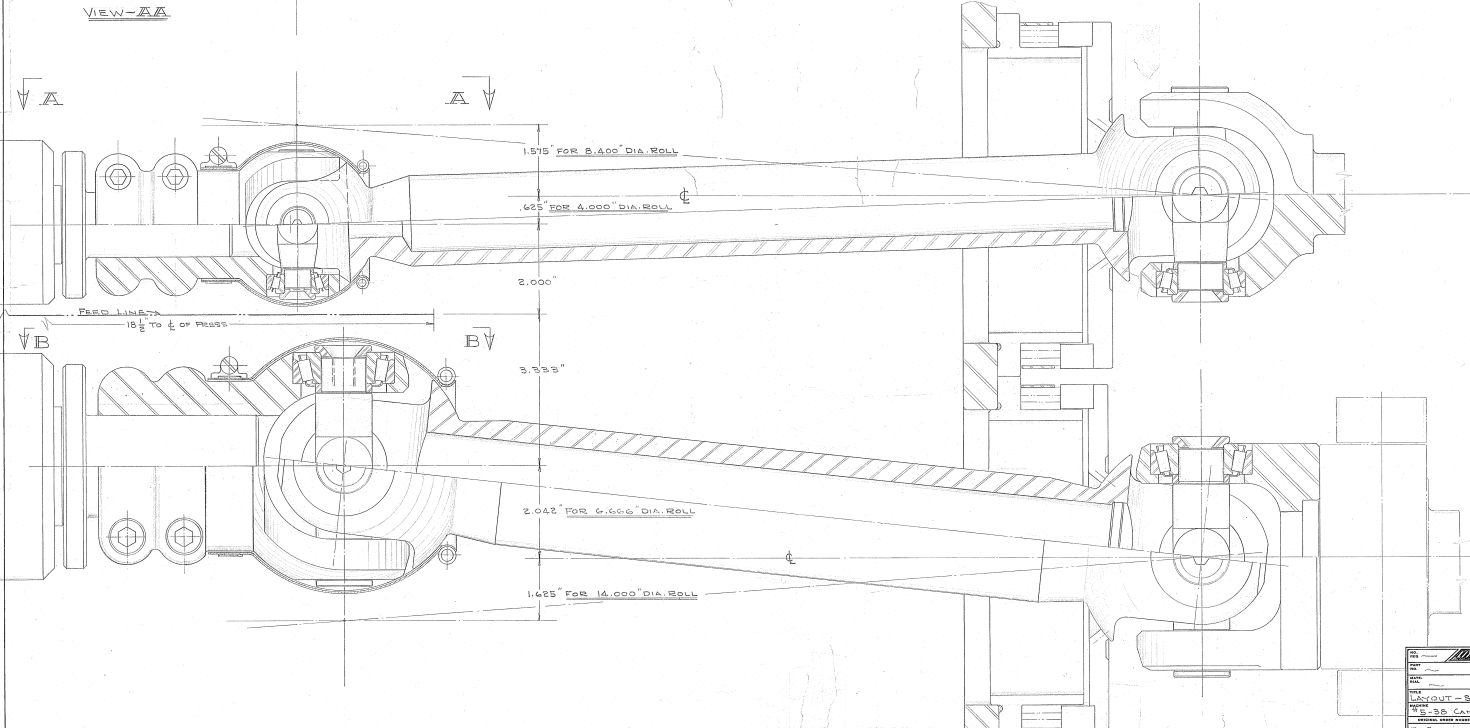


VIEW-AA

VIEW-BB



↓ A

↓ A

1.575" FOR 8.400" DIA. ROLL

.625" FOR 4.000" DIA. ROLL

2.000"

PERD. LENGTH
18 1/2 TO 4" OF PRESS

↓ B

↓ B

3.333"

2.042" FOR 6.656" DIA. ROLL

1.625" FOR 14.000" DIA. ROLL

3"

DESIGN	DATE	BY	CHKD
APP'D			
LAYOUT - SEALS & UNIN. JOINTS			
MATERIAL - 35 CARBON STEEL, FRIED			
TOLERANCES UNLESS OTHERWISE SPECIFIED			
D 482.05			