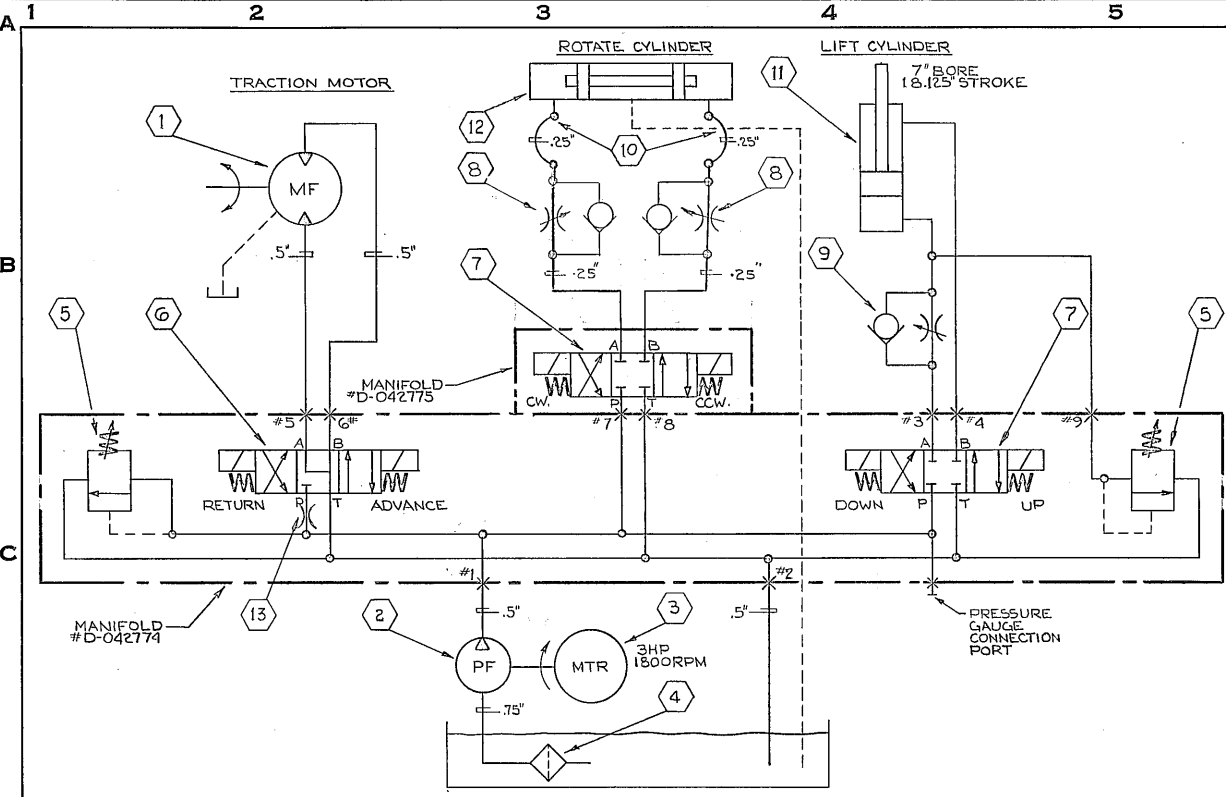


MAY 1967

| REVISIONS | | | |
|-----------|----|----------|-----|
| DATE | BY | WAG | BY |
| 7-24-74 | | B-65799 | |
| 8-21-74 | 13 | REDFAWN | MSC |
| | | REVISED | H |
| | | 8-116849 | |



SEQUENCE OF OPERATION

1. START PUMP MOTOR & ENERGIZE VALVE CONTROL CIRCUIT.
2. LONGITUDINAL MOVEMENT-HOLD "FORWARD" OR "REVERSE" BUTTON TO ENERG. VALVE (6)
3. TO ROTATE TABLE-HOLD "CLOCKWISE" OR "COUNTERCLOCKWISE" BUTTON TO ENERG. VALVE (7)
4. VERTICAL TRAVEL-HOLD "UP" OR "DOWN" BUTTON TO ENERGIZE VALVE (7)
5. VALVE (9) PREVENTS DAMAGE TO REEL WHEN ARMS ARE EXPANDED.

NOTE:
USE "PARKER" TRIPLE-LOK FITTINGS. ALL TUBING TO BE -.375" UNLESS NOTED
.25"-.5" TUBING-.035" WALL
.625"-1" TUBING-.049" WALL

| QTY. | DESCRIPTION | LITTELL PART NO. | |
|------|-------------|---|----------|
| 13 | 1 | ORIFICE-PIPE PLUG | B-117952 |
| 12 | 1 | CYLINDER-"LITTELL"-FOR SADDLE ROTATION | D-86086 |
| 11 | 1 | CYLINDER-"LITTELL"-HYD. 7" BORE, 18.125" STROKE | C-80180 |
| 10 | 1 | HOSE ASSY. ROTARY TOP L.M. B-092985 | |
| 9 | 1 | VALVE-"PNEU-TROL"-FLOW CONTROL #FEI-20-375 | 091301 |
| 8 | 2 | VALVE-"PNEUTROL"-FLOW CONTROL #FEI-20-375 | 092699 |
| 7 | 2 | VALVE-"VICKERS"-4WAY 3POS. DOUBLE SOL. #DG454-012C-50 | 091517 |
| 6 | 1 | VALVE-"VICKERS"-4WAY 3POS. DOUBLE SOL. #DG454-016C-50 | 091516 |
| 5 | 2 | VALVE-"VICKERS"-RELIEF #CG-03-B-10-581 | 091299 |
| 4 | 1 | OIL STRAINER-"MARVEL"-#E-3/4"-5 | 091304 |
| 3 | 1 | MOTOR-"GENERAL ELECT."-3HP. 1800 RPM. FRAME BODY 3φ-60HZ 220/460V 3φ-60HZ 230/460V 3φ-60HZ 240/480V 3φ-50HZ | 090691 |
| 2 | 1 | PUMP-"VICKERS"-HYD. #V-105-E-10 | 091244 |
| 1 | 1 | MOTOR-"VICKERS"-HYD #M2-210-25-3B-13 | 091274 |

PARTS LIST

| | | | |
|---|-------------|------------------------------|-------------|
| | | DATE | 10-26-70 |
| NO. REQ. | PART NO. | SCALE | DRP APP. BY |
| 125 MICROINCH FINISH | | BY | L.E. |
| DIMENSIONS | TOLERANCE ± | DWG. BY | CH. BY |
| X AND X.X | 0.1" | | ELV. |
| X.XX | 0.01" | TITLE | |
| X.XXX | 0.001" | DIAGRAM-HYDRAULIC-GRAPHICAL | |
| X.XXXX | 0.0005" | MACHINE | |
| | | # S250 COIL CAR-ROTATING TOP | |
| BREAK SHARP CORNERS 0.03 UNLESS OTHERWISE SPECIFIED | | ORIGINAL ORDER NUMBER | DWG. NO. |
| | | 77434-69 | B 84360 |