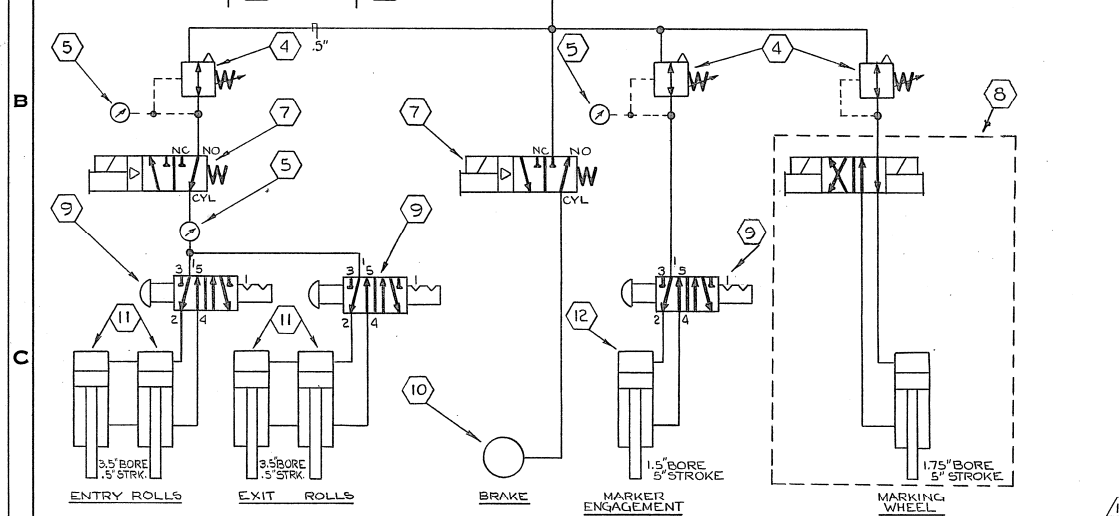


REVISIONS			
DATE	SYM.	WAB	BY
3-19-74	9	"HUNT" VALVE	J.J.G.
2-17-70		ORIGINAL	C.M.H.
		1.5 3 2 2	
		1.8 6 2	
		144 2 2 7	
3-9-67	A	5/16" 5/16" REG-208	W/L
3-9-67	B	1/2" 3/4" 1/2" 1/2" 1/2" 1/2"	W/L
3-9-67	C	1/2" 208 #11-012-027	W/L
3-9-67	d	1/2" 1/2" #18-013-241	W/L
		251 8 0 2	

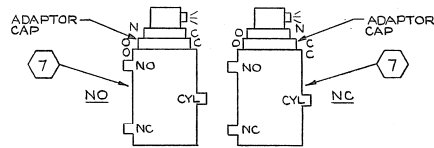


12	1	CYLINDER - "MILLER" - AIR 1.5 BORE .5" STROKE	095053
11	4	CYLINDER - "ORTMAN MILLER SPECIAL AS PER "LITTELL" DWG. # 11-775	B-17275
10	1	BRAKE - "FAWICK AIRFLEX" TYPE "CS" SIZE 4CS130	092413
9	3	VALVE - "HUNT" - AIR, PALM-BUTTON OPERATED DET. #02531-H2 - SERIES "3" - .25"	093140
8	1	CYLINDER - "BELLOW" - AIR MOTOR SERIES "2" 1.75 BORE .5" STROKE WITH DOUBLE SOL VALVE, FRONT FLANGE MOUNTING #B-2012-301G	B-67522
7	2	VALVE - "AIRMATIC" SWAY SOL PILOT OPER VERT TYPE #342-306-1110V50/60HZ	092499
6			
5	3	GALGE - "NORGREN" - AIR #18-013-209-.125" (0-60 PSI)	093948
4	3	REGULATOR - "NORGREN" - # R11-300-RNL 3/8"	093936
3	1	PRESSURE SWITCH - "50 D" CLASS # 2012, TYPE ACW-1	090565
2	1	LUBRICATOR - "NORGREN" - # L12-400-MPLA 1/2"	093941
1	1	FILTER - "NORGREN" - AIR SAFETY # F12-400-M37A 1/2"	093931

NOTE:
 USE "PARKER" INTRULOK FITTINGS
 ALL TUBING TO BE .375" UNLESS NOTED
 .25"-.5" TUBING - .035" WALL
 .625"-1" TUBING - .049" WALL

NORMALLY OPEN OPERATION
 APPLY PRESSURE TO PORT MARKED "NO" ROTATE PILOT VALVE SO THAT LETTERS "N" & "O" WILL BE IN LINE.

FOR EXTERNAL PILOT EXHAUST POSITION ADAPTOR CAP 90° TO BLOCK INTERNAL PILOT PORT & REMOVE BUTTON HEAD SCREW.
NORMALLY CLOSED OPERATION
 APPLY PRESSURE TO PORT MARKED "NC" ROTATE PILOT VALVE SO THAT LETTERS "N" & "C" WILL BE IN LINE.



△ - SUPPLIED BY CUSTOMER

SYM QTY. DESCRIPTION LITTELL PART NO.

PARTS LIST

BR4 1 MARKER

UNLESS OTHERWISE SPECIFIED FINISHED SURFACES HAVE:				DATE	11-20-74
125 MICROINCH FINISH		SCALE		DR. # 123	
DIMENSIONS	TOLERANCE ±	SCALE		DR. # 123	
X AND XX	0.1"	SCALE		DR. # 123	
XXX	0.01"	SCALE		DR. # 123	
XXXX	0.001"	SCALE		DR. # 123	
X.XXXX	0.0005"	SCALE		DR. # 123	
BREAK SHARP CORNERS 0.03 UNLESS OTHERWISE SPECIFIED				DATE	
		ORIGINAL ORDER NUMBER 77418-69		DWG. NO. B 80170	