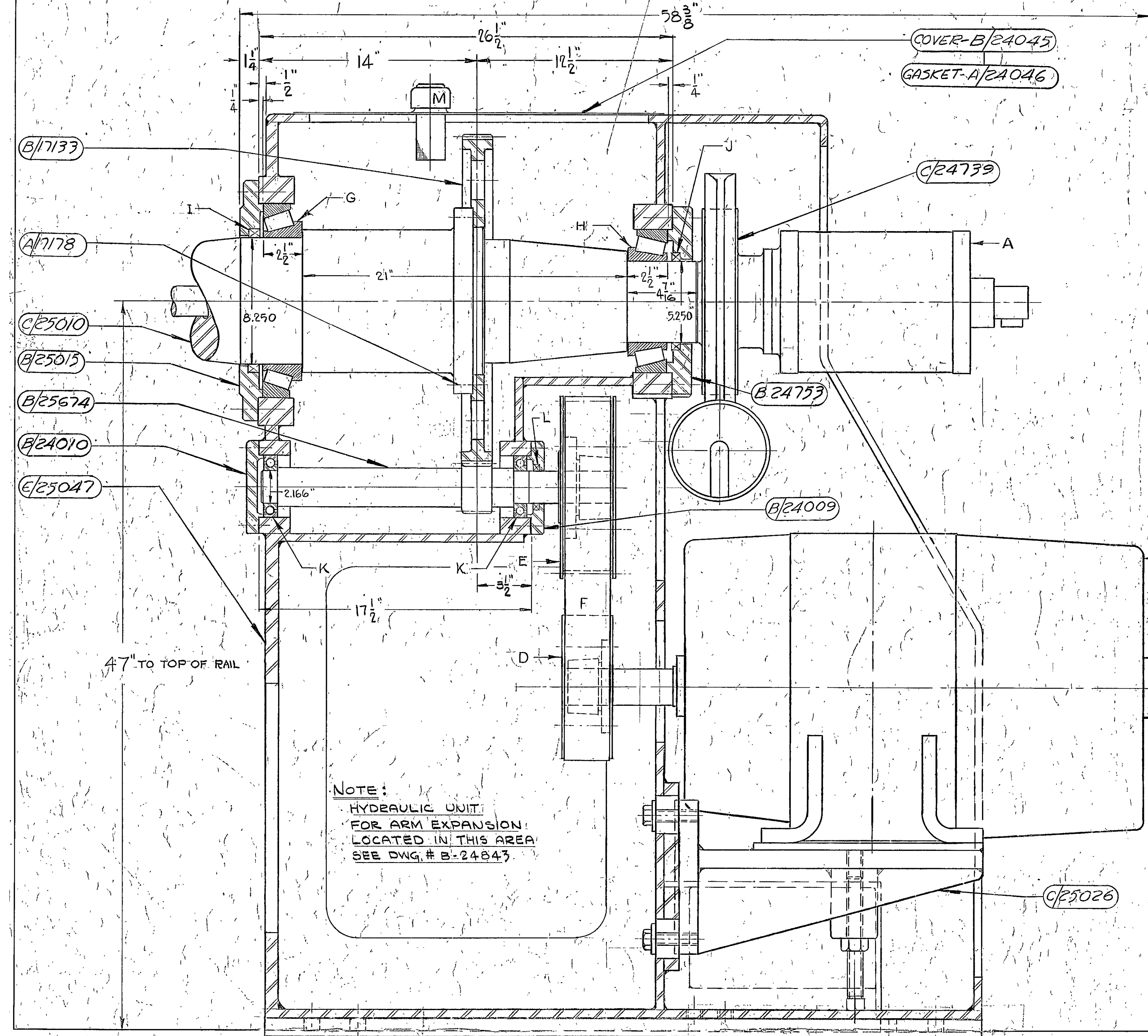
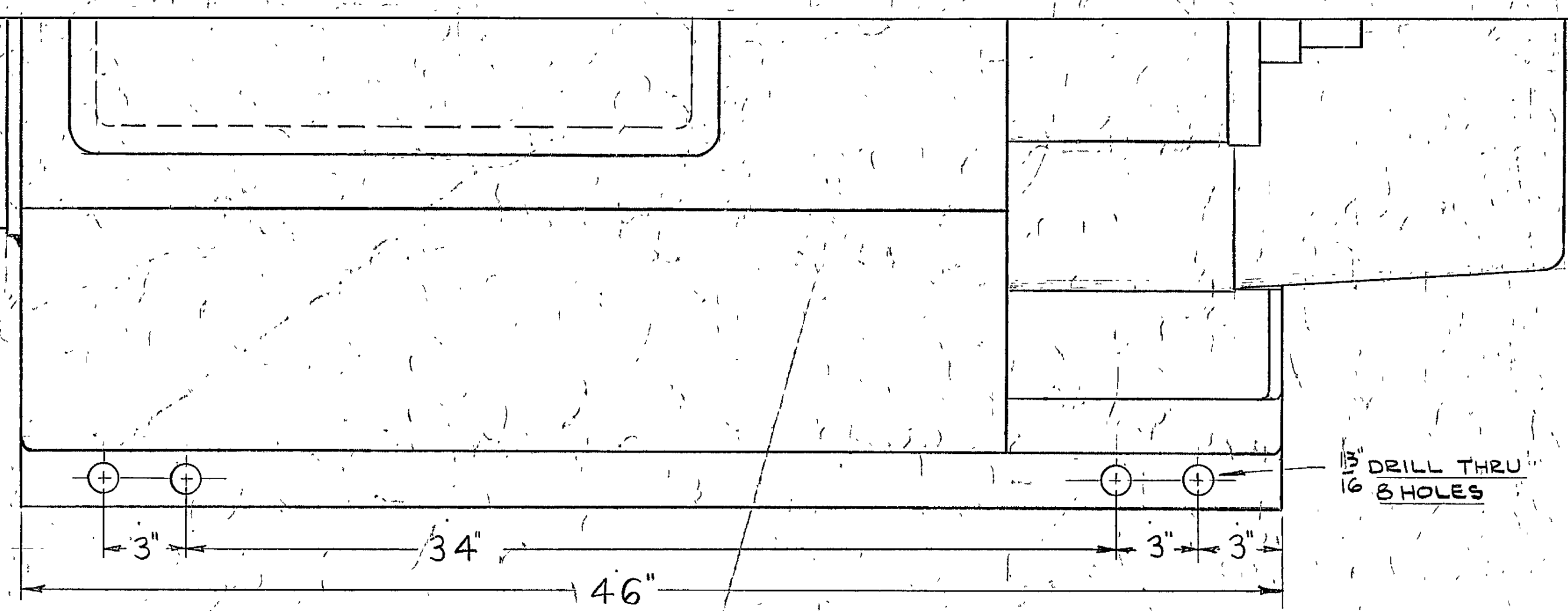


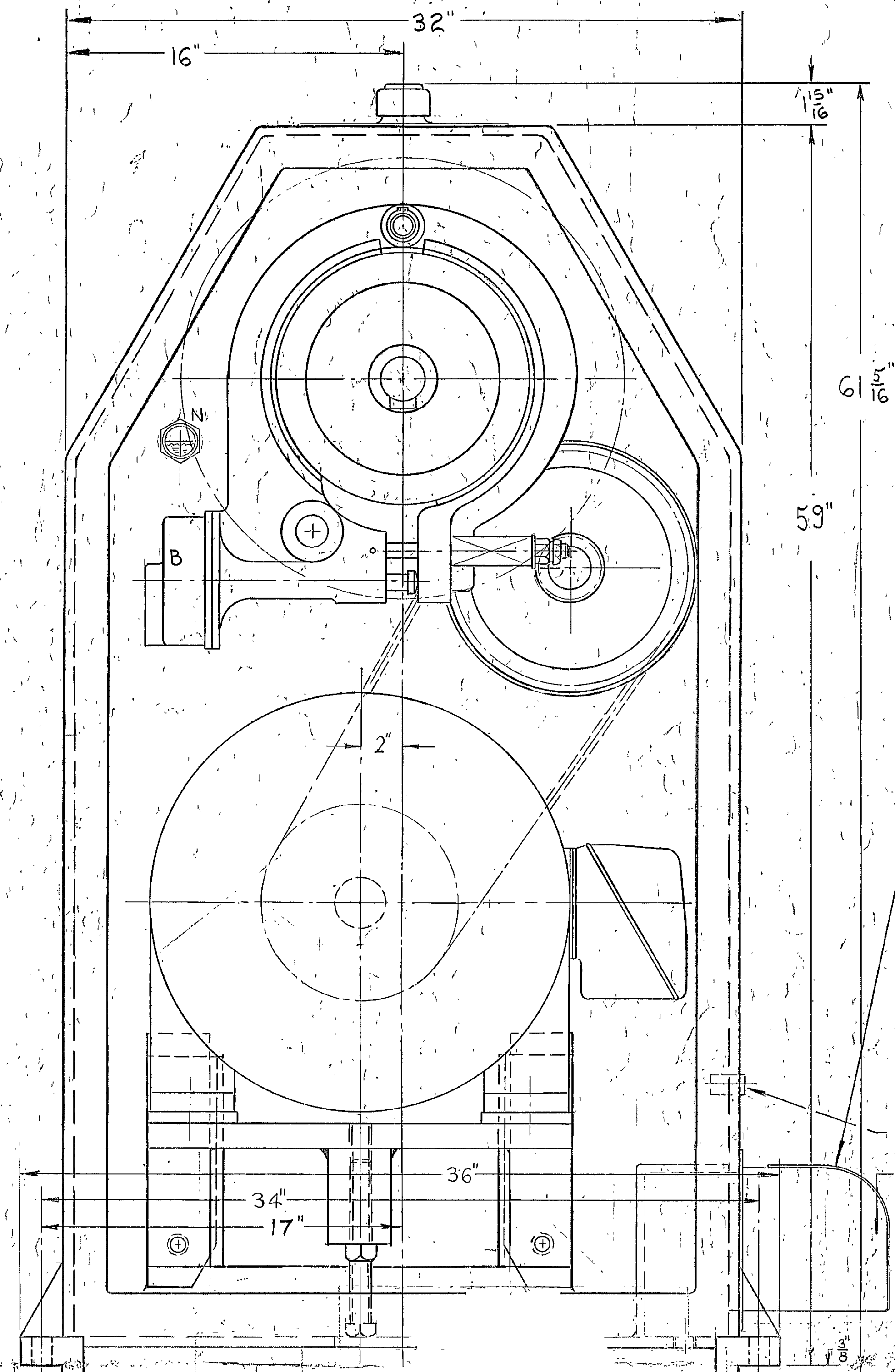
FILING LOCATION D- 28581		REVISIONS	
DATE	SYM.	WAS	BY
1-22-66		D-24343	I.E.

LIST OF COMMERCIAL PARTS

- A- "S-P" ROTATING HYDRAULIC CYLINDER, 8" BORE, 7" STROKE
- B- "FAWICK" TYPE CS BRAKE ELEMENT, SIZE #12 CS 200
- C- "GENERAL ELECTRIC" 5 HP D.C. MOTOR, 1200-300 RPM, FRAME #CD-404
- D- "U.S. RUBBER" SPECIAL DRIVE PULLEY #34 XH 300
- E- "U.S. RUBBER" DRIVEN PULLEY #40 XH 300
- F- "U.S. RUBBER" TIMING BELT #700 XH 300, 3/8" PITCH, 3" WIDE
- G- "TIMKEN" CONE #93825A & CUP #93125
- H- "TIMKEN" CONE #95525 & CUP #95925
- I- "CHICAGO RAWHIDE" OIL SEAL #950HMS88
- J- "CHICAGO RAWHIDE" OIL SEAL #62558-M1
- K- "FAFNIR" BRG. #211W, 2 REQ.
- L- "GARLOCK KLOZURE" #51 X.1360
- M- "VICKERS" FILLER CAP #SP-113-B
- N- "QITS" SIGHT GAUGE #4045 - 1 1/2" P.I.



NOTE:
HYDRAULIC UNIT
FOR ARM EXPANSION:
LOCATED IN THIS AREA
SEE DWG. # B-24843.



KEY
DRG No. OR SIZE / PART No.

COIL DATA
MAX. WEIGHT 20,000 LBS.
MAX. WIDTH 38"
MAX. O.D. 60"
I.D. 16"

F. J. LITTELL MACH. CO. CHICAGO ILL.		DATE	1-22-66
NO. REC'D.	NO. OF SETS	SCALE	1/2" = 1"
MATERIAL	BY	APP.	I.E.
TITLE: LAYOUT - DRIVE ASSY.			
MACHINE: # S 200 REEL			
ORIGINAL ORDER NUMBER	DWG. NO.	DATE	
66103	D	28581	

SCANNED