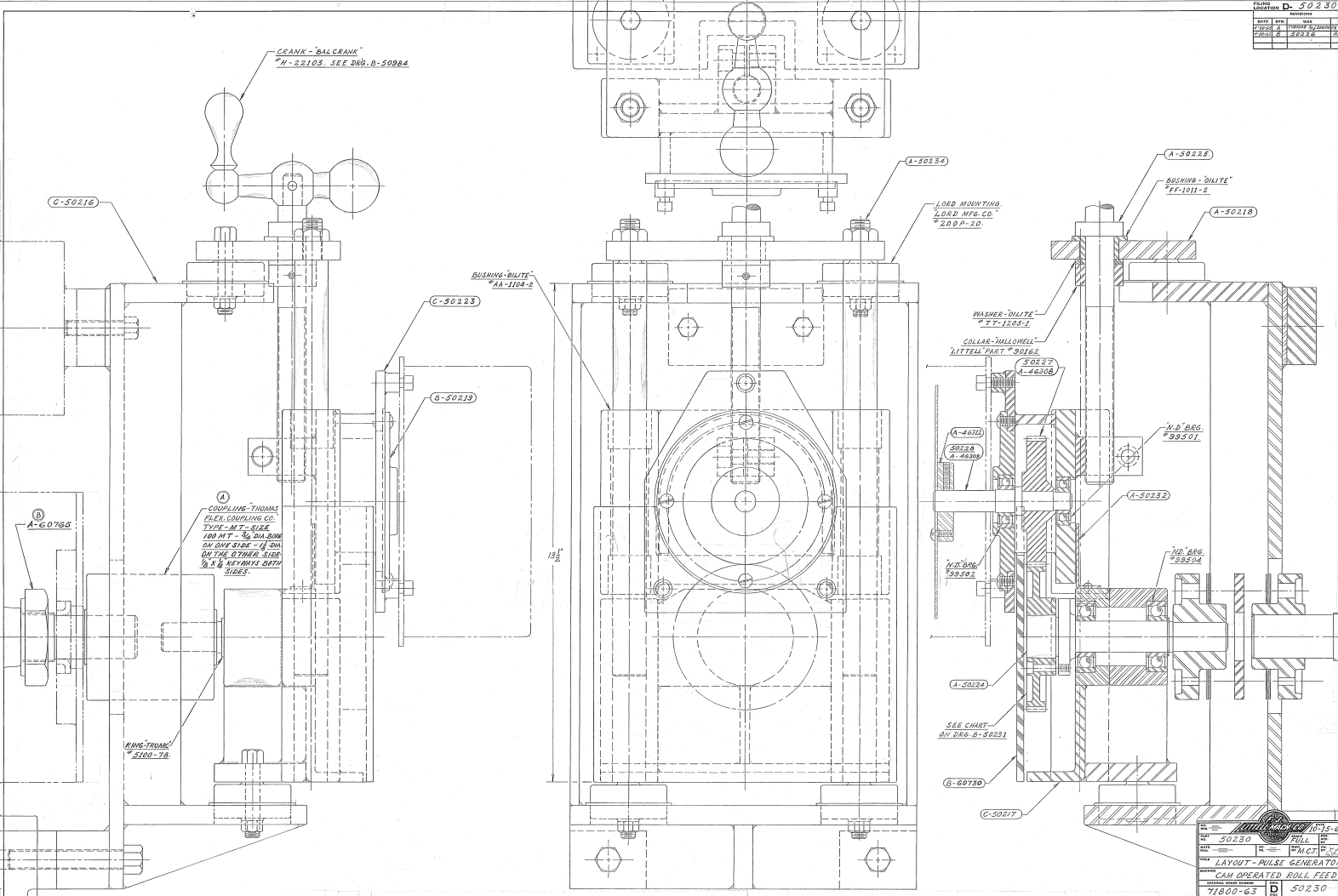


| | | | |
|------------|--------------|--------------|--------------|
| FORM NO. 1 | | | |
| REVISED | | | |
| DATE | BY | CHKD | BY |
| 1952 | J. H. HARRIS | J. H. HARRIS | J. H. HARRIS |
| 1952 | J. H. HARRIS | J. H. HARRIS | J. H. HARRIS |
| 1952 | J. H. HARRIS | J. H. HARRIS | J. H. HARRIS |



A
COUPLING - THOMAS
FLEX COUPLING CO.
TYPE - MT - SIZE
100 MT - 3/4 DIA. BORE
ON ONE SIDE - 1/2 DIA.
ON THE OTHER SIDE
3/4 X 1/2 KEYS IN BOTH
SIZES.

KING-TONK
#5100-78

SEE CHART
ON Dwg. B-50231

| | | | |
|------|------|--------------|--------------|
| REV. | DATE | BY | CHKD. |
| 1 | 1952 | J. H. HARRIS | J. H. HARRIS |
| 2 | 1952 | J. H. HARRIS | J. H. HARRIS |
| 3 | 1952 | J. H. HARRIS | J. H. HARRIS |


 10-15-63
 50230 FULL
 P.M.C.T. 501
 LAYOUT - PULSE GENERATOR
 CAM OPERATED ROLL FEED.
 71800-63 D 50230